

Seward ← → Glenn
CONNECTION

SEWARD GLENN CONNECTION
PEL STUDY

DECEMBER 10, 2024 PUBLIC
OUTREACH SUMMARY





TABLE OF CONTENTS

INTRODUCTION	1
OUTREACH AND PUBLICITY	1
PUBLIC MEETING #5 OVERVIEW	6
COMMENT PERIOD OVERVIEW	7
NEXT STEPS	7

ATTACHMENTS

ATTACHMENT A: PROJECT WEBSITE UPDATES AND METRICS	8
ATTACHMENT B: NEWSPAPER ADS	10
ATTACHMENT C: PUBLIC MEETING & COMMENT PERIOD OUTREACH METHODS	12
ATTACHMENT D: PUBLIC MEETING PRESENTATION	16
ATTACHMENT E: PUBLIC MEETING POSTERS	22
ATTACHMENT F: COMMENT FORMS	32
ATTACHMENT G: ONLINE OPEN HOUSE	34
ATTACHMENT H: PUBLIC MEETING SIGN-IN SHEET	38

INTRODUCTION

The Alaska Department of Transportation and Public Facilities (DOT&PF), in collaboration with Anchorage Metropolitan Area Transportation Solutions (AMATS), is conducting a Planning and Environmental Linkages (PEL) Study (Study) to identify and evaluate options to improve safety, livability, regional travel between the Seward and Glenn Highways, and local travel within the surrounding neighborhoods. The Study will also identify ways to improve access between the Port of Alaska and the highway network.

DOT&PF is engaging the community and other key stakeholders in the Study to guide outcomes and solutions that not only meet the Study's Purpose and Need but also deliver collaborative solutions that thoughtfully consider the diverse needs of stakeholders.

The Study is currently in the Evaluation and Refinement phase.

This public outreach summary tracks and documents public involvement activities associated with the fifth public meeting and 80-day comment period¹ (December 10, 2024 – February 28, 2025) on the Study's refined alternatives.² The summary includes public involvement strategies and tactics used to publicize the public meeting held on December 10, 2024, and engage stakeholders throughout the 80-day public comment period to encourage robust public input. Comments heard during this comment period will be used to further refine alternatives and shape the Study's recommendations.

OUTREACH AND PUBLICITY

The methods described in the subsections below were used to notify the public about the December 10 meeting, the public comment period, where to go for additional information, and how to comment.

WEBSITE

The Study Team updated the study website, Seward to Glenn Connection PEL Study | (sewardglennconnection.com), to share information about the public meeting and comment period, as well as to provide opportunities to submit comments to the Study Team. While comments are welcome at any time, public comments on refined alternatives could be submitted by an online form, through the project email (info@sewardglennconnection.com), by phone at (907) 206-2289, or through a mailed-in written comment form between December 10, 2024, and February 28, 2025. The website, which also provides a link to join the project mailing list, is updated routinely throughout the project. Between December 10, 2024, and February 28, 2025, 1,436 users visited the site.

See Attachment A for screen shots of the project website and additional website metrics.



¹ Comment period was initially 45 days but was expanded to 80 days at the request of the public.

² See https://www.sewardglennconnection.com/documents/Draft%20Screening%20Report_12-07-24.pdf for a full description of refined alternatives.

ADVERTISING

The following paid advertising methods were used (Attachment B):

1 Anchorage Daily
News (ADN)
11/27/2024

1 Anchorage Daily
News (ADN)
11/27/2024

+10K

LEGAL AD

DISPLAY AD

POSTCARDS

OUTREACH: BY THE NUMBERS

In addition to the advertising activities listed above, the Study Team implemented the following outreach methods (Attachment C):

6

COMMUNITY
CALENDARS
& LISTSERVE
POSTINGS

- Anchorage Chamber of Commerce on 11/18/2024
- Anchorage Daily News Calendar on 11/18/2024
- State of Alaska (SOA) GovDelivery on 11/18/2024
- SOA Public Involvement Calendar (OPN) on 11/18/2024
- What's Up on 11/18/2024
- Federation of Community Councils on 11/15/2024

10

EMAILS TO
COMMUNITY
COUNCILS
(CC)

11/20/25 & 12/12/25

- Airport Heights CC
- Downtown CC
- Fairview CC
- Government Hill CC
- Rogers Park CC

8

FACEBOOK
POSTS

- Public Meeting Save the Date – 11/18/2024
- Public Open House Event – 11/22/2024
- Public Meeting Announcement – 11/25/ 2024
- Public Meeting Today and Online Open House Today – 12/10/2024
- Public Comment Period Today – 12/10/2024
- Public Comment Period Extension Event – 02/14/2025
- Public Comment Period Extension Post 2 Weeks Left – 02/14/2025
- Public Comment Period Last Call – 02/27/2025

8

E-BLASTS TO 445 RECIPIENTS

- Public Meeting Save the Date – 11/18/2024
- Public Meeting Announcement – 11/24/2024
- Public Meeting Today and Online Open House Today – 12/10/2024
- Public Comment Period Now Open – 12/13/2024
- Public Comment Period Half-Way Over – 12/30/2024
- Public Comment Period Extension – 01/21/2025
- Public Comment Period Extension Post 2 Weeks Left – 02/14/2025
- Public Comment Period Closes Tonight – 02/28/2025

17

MEETING ANNOUNCEMENT FLYERS POSTED

- Carrs (1340 Gambell Street, Anchorage, AK 99501)
- Carrs (2920 Seward Highway, Anchorage, AK 99503)
- Fred Meyer (1000 E Northern Lights Boulevard, Anchorage, AK 99508)
- Red Apple Market
- Fire Island Bake Shop
- Mountain View Public Library
- Anchorage Public Library (Z.J. Loussac Library)
- U.S. Post Office (800 Ingra Street, Anchorage, AK 99501)
- University of Alaska Anchorage:
 - » ConocoPhillips Integrated Science Building
 - » Edward & Cathryn Rasmuson Hall
 - » Student Union
- Fairview Recreation Center
- Anchorage School District:
 - » Bartlett High School
 - » Fairview Elementary School
 - » Central Middle School
 - » Denali Montessori School
 - » Bettye Davis East Anchorage High

35

INDIVIDUAL MAILERS CONTAINING EDUCATIONAL PROJECT MATERIAL AND FLYERS TO THE ORGANIZATIONS AND INSTITUTIONS LISTED ON 11/26/2024:

- Polynesian Association of Alaska
- Korean American Community of Anchorage
- Alaska Asian Cultural Center
- Alaska Black Caucus
- Alaska NAACP
- Alaska District Council of Assemblies of God
- Anchorage Unitarian Universalist Fellowship
- Trinity Christian Reformed Church
- Catholic Social Services on behalf of the Brother Francis Shelter
- Bethel Hispanic Church of God
- Anchor Park United Methodist Church
- Crossroads Assembly of God
- First Evangelical Covenant Church of Anchorage AK
- Eastside United Pentecostal
- Shiloh Missionary Baptist Church
- East Third Avenue Baptist Church
- Central Lutheran Church
- Alaska Corp of Seventh Day Adventists
- Wat Lao of Anchorage
- Grandview Baptist church
- Covenant House Alaska
- American Baptist Home Mission Society
- Corp Catholic Archbishop of Anchorage
- Most Worshipful Prince Hall Grand Lodge of Alaska
- Praise Temple Way of the Cross Church of Christ
- Anchorage Church of Christ
- Lighthouse Christian
- Greater friendship Baptist Church
- Pentecostal Holiness Church
- Lighthouse Christian Fellowship
- Global Partnership Ministries
- Voice of Christ Full Gospel Church
- Church of the New Testament
- Antioch Church of God in Christ
- Manai Fou Assembly of God

COMMUNITY COUNCIL PRESENTATIONS

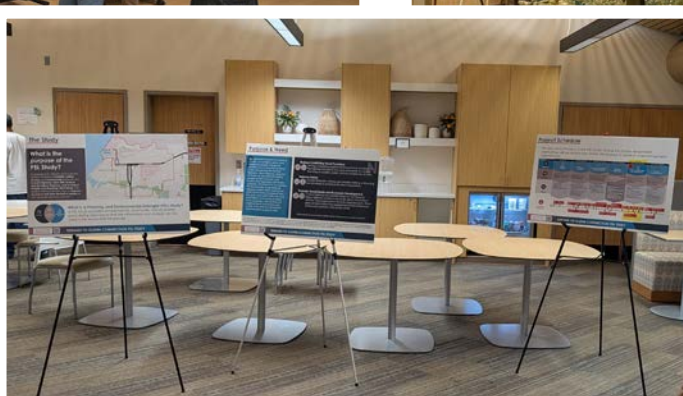
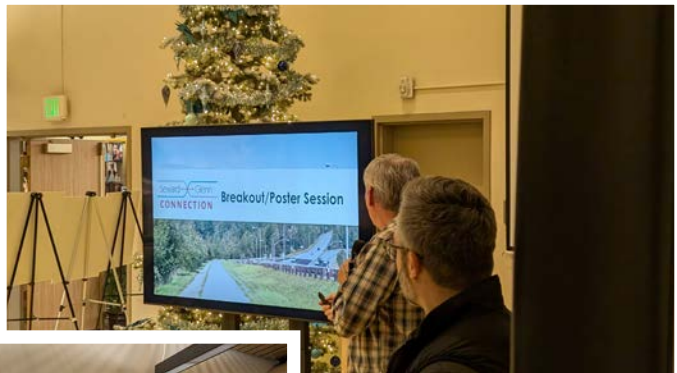
The Study Team presented at the Airport Heights Community Council meeting on January 16, 2025. The presentation format included a Study background, a summary of what the Study Team learned from the feedback on the last round of alternatives, an overview of the refined alternatives, and a request for comments. The presentation was followed by questions from the public.

8+

THE STUDY TEAM PRESENTED AT 8+ SMALL GROUP MEETINGS:

- Mountain View Reconnecting Communities Grant Committee - Monthly
- Rogers Park Transportation Committee Co-Chair 1-on-1 – 11/4/2024
- Municipality of Anchorage Parks & Recreation Meeting – 11/8/2024
- Rogers Park Transportation Committee – 11/15/2024
- Alaska Trucking Association – 12/19/2024
- Airport Heights Community Council – 01/16/2025
- Merrill Field Leadership – 01/17/2025
- Anchorage Senior Activity Center – 1/22/2025
- Alaska Trucking Association Board – 2/2/2025

The format was similar to the community council presentations, and attendees were encouraged to submit comments on the refined alternatives.



PUBLIC MEETING #5 OVERVIEW

The Study Team hosted its fifth public meeting on Tuesday, December 10, 2024, at the Anchorage Senior Activity Center from 4:30 to 6:30 P.M.

MEETING SUMMARY

The meeting began with a presentation (Attachment D) to share the meeting agenda, discuss the Study’s overall goals and design approach, review what the Study Team learned during the preliminary alternative comment period and how it helped refine the designs, and introduce the refined alternative designs and port connection options, which were displayed on posters (Attachment E) around the room. Following the presentation, attendees were invited to join staff at poster stations focused on key content from the presentation. This gave attendees the opportunity to have one-on-one time with Study Team members, ask questions, and submit comments on refined alternative designs. Comment forms were available at tables throughout the room (Attachment F).

An online open house (Attachment G), including information presented at the in-person open house, was available throughout the 80-day public comment period. The online open house is archived for review on the project website at <https://sewardglennconnectiononline.com/oloh1/>.

ATTENDANCE

In addition to the Study Team listed below, 143 people signed into the meeting (Attachment H).

DOT&PF

Galen Jones, P.E.
Project Manager

Luke Bowland, P.E.
Central Region Preconstruction
Engineer

Sean Holland, P.E.
Central Region Director

AMATS

Aaron Jongenelen
Executive Director

HDR

John McPherson
Project Manager

Laurie Cummings,
AICP CTP, ENV SP
Planner

Taylor Horne
Environmental

Edith McKee, P.E.
Engineer

Amy Burnett
Public Involvement Lead

Alice Horazdovsky
Public Involvement

Pearl-Grace Pantaleone
Public Involvement

Rory McAllister
Public Involvement

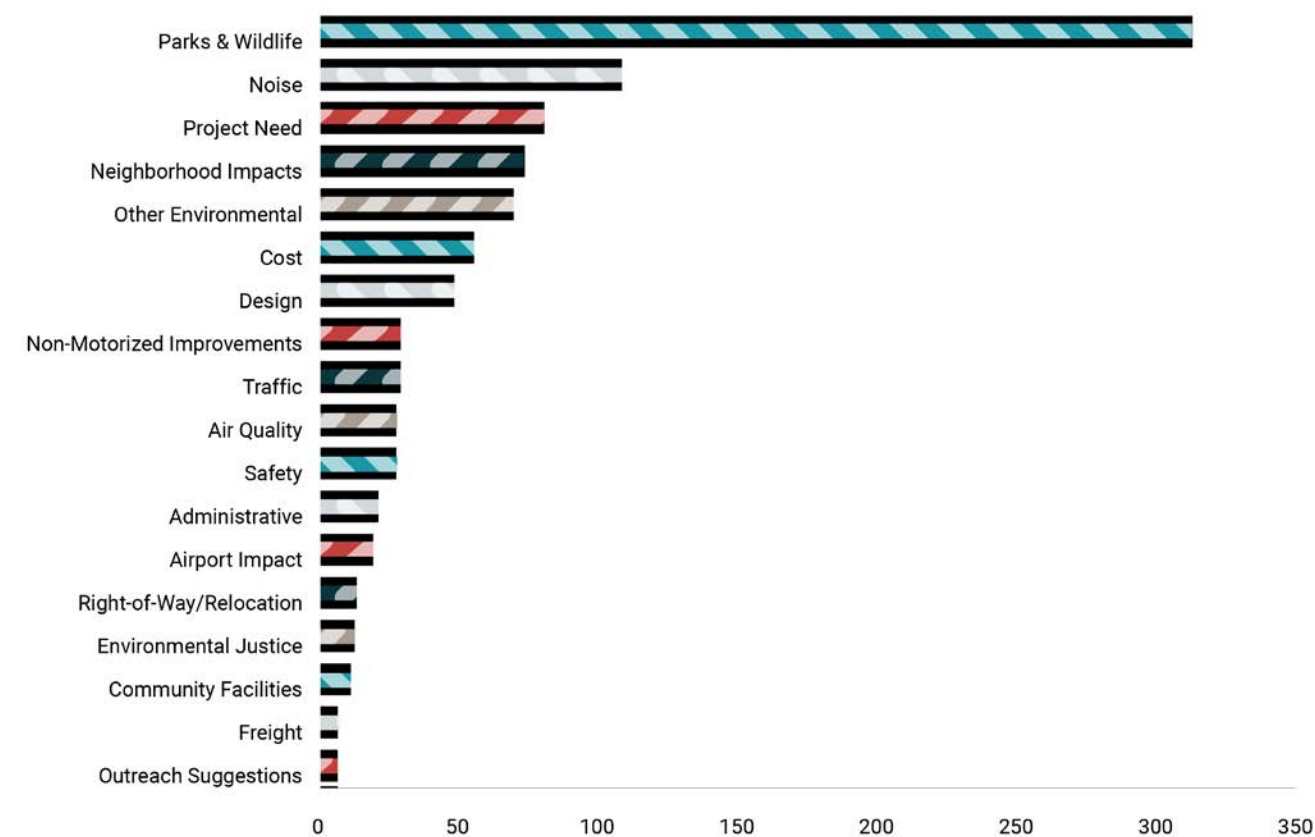
Garrett Rutherford
Engineer

Greg Hartman, P.E.
Engineer

COMMENT PERIOD OVERVIEW

The public comment period was initially scheduled to take place between December 10, 2024, and January 20, 2025, but was extended to February 28, 2025, at the request of stakeholders.

We received a total of more than 500 comments. By issue area, "Parks & Wildlife" received 313 comments, indicating strong community interest in environmental impacts and parks preservation. This is due in large part to commentors' concerns with Alternative D, which would affect Chester Creek Greenbelt Park. "Noise" also generated 109 comments. Other key comment categories included questioning the "Project Need" (81), "Neighborhood Impacts" (74), and "Cost" (56). Additional categories and their frequency can be found in the graphic shown below. Note that some comments touched multiple categories.



You can view all comments and Study Team responses on the Study website both in the Project Library and under Public Outreach/Outreach Activities.

NEXT STEPS

The Study Team has compiled and is drafting responses to comments received during the comment period. The information will be available on the project website. The team will use the information to further screen and refine the alternatives, leading to recommendations. Cost estimates, traffic models, potential environmental impacts, and other screening criteria will be used to arrive at recommendations, which will be available in a draft PEL Report.

The next phase of public involvement activities will share how public comments on the refined alternatives and additional data are reflected in the recommendations. The draft report is expected to include alternative recommendations, refined cost estimates and project phasing recommendations. We anticipate delivering draft recommendations in September 2025 and will seek public comments at that time.



ATTACHMENT A: PROJECT WEBSITE UPDATES AND METRICS

OUTREACH - WEBSITE UPDATES

myAlaska

Departments

State Employees

Alaska Department of Transportation and Public Facilities

CENTRAL REGION

Home

Travel

Business

News and Social

Projects

About Us

Seward

Glenn

CONNECTION

DOT&PF > Central Region > Projects >

[Project Home](#)
[Project Description](#)
[FAQs](#)
[Project Library](#)
[Public Outreach](#)
[Contact Us](#)

Seward to Glenn Connection PEL Study

Public Open House #5

December 10 | 4:30 - 6:30 P.M.

Anchorage Senior Activity Center

Click this flyer for details!

Seward Glenn Connection PEL Study

Public Open House #5 - Join Us!

December 10, 2024 from 4:30 P.M. to 6:30 P.M. at the Anchorage Senior Activity Center.

We need your feedback! Click this banner to download and review!

Draft Alternative Refinement and Screening Report

Comment December 10 - January 23, 2025

What's New?

- December 2024: Public House #5 - December 10, 2024. Additional details will be posted as they're finalized!
- We need your feedback on the Draft Alternative Refinement and Screening Report!

Overview:

This study will identify and evaluate options to improve safety, livability, regional travel between the Seward and Glenn Highways, and local travel within the surrounding neighborhoods. Currently, the two controlled access freeways are connected through the study area by slower-speed arterial roads. The study will also identify ways to improve access between the Port of Alaska and the highway network.

The study is being prepared as a Planning and Environmental Linkages (PEL) Study. To find out more about how a PEL Study works, please see the [Study Description](#) page.

Public Outreach:

The PEL Study will be successful only if there is meaningful and continued public involvement in the process. Diverse public involvement helps DOT&PF make decisions that meet public needs and desires. The public will have several opportunities to engage with the project team. Stay up to date on outreach opportunities by signing up for our project email list and visiting the [Public Outreach](#) tab for current and upcoming events!

Public Outreach

Join our E-mail List!

This planning document may be adopted in a subsequent environmental review process in accordance with 23 U.S.C. 168 Integration of Planning and Environmental Review.

The environmental review, consultation, and other actions required by applicable federal environmental laws for this project are being, or have been, carried out by DOT&PF pursuant to 23 U.S.C. 327 and a Memorandum of Understanding dated November 3, 2017, and executed by FHWA and DOT&PF. The environmental review, consultation, and other actions required by applicable Federal environmental laws for this project are being, or have been, carried out by DOT&PF pursuant to 23 U.S.C. 327 and a Memorandum of Understanding dated April 13, 2023, and executed by FHWA and DOT&PF.

Site Map

Policies

Nondiscrimination

Accessibility

Employee Directory

DOT&PF Staff Resources

Department of Transportation & Public Facilities

PO Box 112509 (mailing)

3132 Channel Drive

Juneau, Alaska 99811-2509

Contact Info

Select Language

English

Spanish

Tagalog

Tamil

Vietnamese

State of Alaska

myAlaska

Departments

State Employees

COPYRIGHT © STATE OF ALASKA

ALASKA DEPARTMENT of TRANSPORTATION & PUBLIC FACILITIES

EMAIL THE WEBMASTER

myAlaska

Departments

State Employees

Alaska Department of Transportation and Public Facilities
CENTRAL REGION

[Home](#)
[Travel](#)
[Business](#)
[News and Social](#)
[Projects](#)
[About Us](#)

Seward to Glenn CONNECTION

[DOT&PF > Central Region > Projects > Public Outreach](#)
[Project Home](#)
[Project Description](#)
[FAQs](#)
[Project Library](#)
[Public Outreach](#)
[Contact Us](#)

Public Outreach

Notice of Public Open House & Public Comment Period

Seward to Glenn Connection PEL Study: Refined Alternatives

DOT&PF is seeking feedback on refined alternative designs for the Seward to Glenn Connection Planning and Environmental Linkages (PEL) Study. Public open house, online open house, and public comment period details are provided below:

Public Open House #5

Date: Tuesday, December 10, 2024 | **Time:** 4:30 – 6:30 p.m. | **Presentation:** 5:00 p.m.
Location: Anchorage Senior Activity Center
 1300 East 19th Avenue
 Anchorage, AK 99501
 People Mover Route 11

Online Open House

12/11/24 – 1/23/25
sewardglennconnectiononline.com

Public Comment Period:

December 10– January 23, 2025

The project team is accepting comments on the [Draft Alternative Refinement and Screening Report](#)

Ways to comment:

- Phone: 907.206.228
- In-person at the December 10, 2024 meeting
- E-mail: info@sewardglennconnection.com
- [Comment form](#)

Study Information:

- [Project Fact Sheet](#)
- [Contact Us](#)

Your input matters:


Submit general comments to the study team!

We need your feedback on the [Draft Alternative Refinement and Screening Report](#) now through January 23, 2025!

Online Open House is now available!
Dec 11 - Jan 23, 2025

Subscribe to our email list to stay up to date on PEL Study progress!

Quick Links



Alaska Department of Transportation and Public Facilities
CENTRAL REGION

Home

Travel

Business

News and Social


Projects

About Us

Seward

Glenn

CONNECTION



DOT&PF > Central Region > Projects >



Project Home
Project Description
FAQs
Project Library
Public Outreach
Contact Us

Seward to Glenn Connection PEL Study

Accepting Comments


12/11/24 - 01/23/25

The Online Open House is now available!









Seward Glenn Connection PEL Study Public Open House #5 - Online Open House - Join Us!

December 11, 2024 through January 23, 2025 at sewardglennconnectiononline.com.



We need your feedback! Click this banner to download and review!
Draft Alternative Refinement and Screening Report
Comment December 10 - January 23, 2025

What's New?

- December 24: Public House #5 - December 10, 2024
 - December 11: **Online Open House** open now until January 23, 2025
 - We need your feedback on the **Draft Alternative Refinement and Screening Report!**

Overview:


This study will identify and evaluate options to improve safety, livability, regional travel between the Seward and Glenn Highways, and local travel within the surrounding neighborhoods. Currently, the two controlled access freeways are connected through the study area by slower-speed arterial roads. The study will also identify ways to improve access between the Port of Alaska and the highway network.

Study Information:

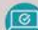
- Project Fact Sheet
- Contact Us

Your input matters:

Submit general comments to the study team!




We need your feedback on the **Draft Alternative Refinement and Screening Report** now through January 23, 2025!



Online Open House is now available!
Dec 11 - Jan 23, 2025

Subscribe to our email list to stay up to date on PEL Study progress!



Join our E-mail List

Quick Links

- Contact the project team
- Central Region
- Central Region Projects
- DOT&PF Projects



ATTACHMENT B: OUTREACH - DISPLAY ADS, LEGAL ADS & POSTCARD

OUTREACH- DISPLAY ADS, LEGAL ADS & POSTCARD

Seward  Glenn
CONNECTION

Seward to Glenn Connection PEL Study

PUBLIC OPEN HOUSE #5

Learn more and share your feedback on refined alternative designs for this study.

Meeting Details

Tuesday, December 10, 2024
4:30 – 6:30 p.m. | Presentation at 5:00 p.m.
Anchorage Senior Activity Center

Online Open House

12/11/24 – 1/23/25

Comment Period

12/10/24 – 1/23/25

Ways to comment

1. By phone: (907) 206-2289
2. In person at the public open house
3. Via email at info@sewardglennconnection.com

Scan me
with your
smartphone!



Visit sewardglennconnection.com for
more details!



Sponsored by the Alaska Department
of Transportation and Public Facilities

Notice of Public Open House & Public Comment Period Seward to Glenn Connection PEL Study: Refined Alternatives

The Alaska Department of Transportation & Public Facilities (DOT&PF) is seeking feedback on refined alternative designs for the Seward to Glenn Connection Planning and Environmental Linkages (PEL) Study. Public open house, online open house, and public comment period details are provided below.

Public Open House #5
Tuesday, December 10, 2024
4:30 – 6:30 p.m.
Presentation at 5:00 p.m.
Anchorage Senior Activity Center
1300 East 19th Avenue
Anchorage, AK 99501
People Mover Route 11

Online Open House
12/11/24 – 1/23/25
<https://sewardglennconnectiononline.com>

Public Comment Period
12/10/24 – 1/23/25
Ways to comment:
907.206.2289, in-person at the Open House,
info@sewardglennconnection.com, or sewardglennconnection.com

This planning document may be adopted in a subsequent environmental review process in accordance with 23 U.S.C. 168 Integration of Planning and Environmental Review. The environmental review, consultation, and other actions required by applicable Federal environmental laws for this project are being, or have been, carried out by DOT&PF pursuant to 23 U.S.C. 327 and a Memorandum of Understanding dated April 13, 2023, and executed by FHWA and DOT&PF.

It is the policy of the Alaska Department of Transportation and Public Facilities (DOT&PF) that no one shall be subject to discrimination on the basis of race, color, national origin, sex, age, or disability. Persons who believe they may have experienced discrimination in the delivery of these federally assisted programs or activities may file a complaint with: Alaska DOT&PF Civil Rights Office 2200 East 42nd Avenue, Room 310, Anchorage, AK 99508; Phone: 907-269-0851, Alaska Relay 7-1-1, or 1 (800) 676-3777; Fax: 907-269-0847.

Pub: Nov. 27, 2024

Seward  Glenn
CONNECTION

We want to hear your voice!

We have refined alternative designs for the Seward to Glenn Connection Planning and Environmental Linkages (PEL) Study based on your input this past spring. We are seeking your feedback again.

Public Comment Period
12/10/24 – 1/23/25

Share ideas:
(907) 206-2289
info@sewardglennconnection.com
sewardglennconnection.com

Join us!

Public Open House #5
Tuesday, December 10, 2024
4:30 – 6:30 p.m.
Presentation at 5:00 p.m.
Anchorage Senior Activity Center
People Mover Route 11



Online Open House
12/11/24 – 1/23/25
sewardglennconnectiononline.com

This planning document may be adopted in a subsequent environmental review process in accordance with 23 U.S.C. 168 Integration of Planning and Environmental Review. The environmental review, consultation, and other actions required by applicable Federal environmental laws for this project are being, or have been, carried out by DOT&PF pursuant to 23 U.S.C. 327 and a Memorandum of Understanding dated April 13, 2023, and executed by FHWA and DOT&PF.
It is the policy of the Alaska Department of Transportation and Public Facilities (DOT&PF) that no one shall be subject to discrimination on the basis of race, color, national origin, sex, age, or disability. Persons who believe they may have experienced discrimination in the delivery of these federally assisted programs or activities may file a complaint with: Alaska DOT&PF Civil Rights Office 2200 East 42nd Avenue, Room 310, Anchorage, AK 99508; Phone: 907-269-0851, Alaska Relay 7-1-1, or 1 (800) 676-3777; Fax: 907-269-0847.

Seward  Glenn
CONNECTION

Seward to Glenn Connection PEL Study Public Open House #5

Tuesday,
December 10, 2024
4:30 – 6:30 p.m.
Anchorage Senior Activity Center
People Mover Route 11



Seward  Glenn
CONNECTION



ATTACHMENT C: PUBLIC MEETING & COMMENT PERIOD OUTREACH METHODS

OUTREACH - E-BLASTS

Seward + Glenn CONNECTION

Seward to Glenn Connection Planning and Environmental Linkages (PEL) Study

LAST CALL!

**Comment Period: Refined Alternatives
Comment Period
EXTENSION**

SHARE YOUR COMMENTS TODAY! Dec 10, 2024 - Feb 28, 2025

Last Call for Comments!

Today (February 28, 2025) is the last day to submit your feedback and thoughts on the Seward to Glenn Connection PEL Study for refined alternatives: **M2P, M2P Plus, AB, C, and D**.

Remember, you don't have to choose your favorite; we want your ideas on how to make the road round of alternatives even better!

Use the highway? Love it or hate it? Work by it? We want to hear from everyone! Your participation will help make this project a success.

Click the button below to view the online open house materials to learn more about the alternatives, considered and provided comment today!

www.sewardglennconnection.com

You can also review and provide input on the full **Draft Alternatives Assessment and Initial Screening Report**. Providing input on this full range of options helps us refine the alternatives and make informed decisions.

Questions or Comments?

PHONE: (907) 206-2289
EMAIL: info@sewardglennconnection.com
For project information, visit www.sewardglennconnection.com

¿Habla español? ¿Koj has lus hemod? ¿E le taubale samod? (907) 206-2289 | info@sewardglennconnection.com

This planning document may be adopted as a subsequent environmental review process in accordance with 23 U.S.C. 105, Department of Transportation Planning and Environmental Review. The environmental review, consultation, and other actions required by applicable federal environmental laws for this project are being, or have been, carried out by DOT/FAA pursuant to 23 U.S.C. 105 and a Memorandum of Understanding dated April 15, 2022, and executed by DOT/FAA and the Alaska Department of Transportation and Public Facilities (DOT/PAF).

It is the policy of DOT/PAF that no one shall be subjected to discrimination on the basis of race, color, national origin, sex, age, or disability. Persons who believe they may have experienced discrimination in the delivery of these federally assisted programs or activities may file a complaint with Alaska DOT/PAF Civil Rights Office, 2000 West 42nd Avenue, Room 300, Anchorage, AK 99509. Phone: 907-265-0801; e-mail: civilrights@dot.alaska.gov; or 1-800-475-2777. Fax: 907-265-0801.

Copyright © 2025 Seward Glenn Connection. All rights reserved.

Our mailing address is:
Seward to Glenn Connection PEL Study
902 S. 2nd Ave. Ste 300
Anchorage, AK 99501-4700

Want to change how you receive these emails?
You can update your preferences or unsubscribe from this list.

ALASKA DOT/PAF

Seward + Glenn CONNECTION

Seward to Glenn Connection Planning and Environmental Linkages (PEL) Study

TWO WEEKS LEFT!

**Comment Period: Refined Alternatives
Comment Period
EXTENSION**

SHARE YOUR COMMENTS TODAY! Dec 10, 2024 - Feb 28, 2025

2 Weeks Left to Comment!

Refined alternatives and a draft detailed alternatives report for the Seward to Glenn Connection PEL Study are available for comment through February 28, 2025.

Did you know we are currently seeking feedback on FIVE refined alternatives: **M2P, M2P Plus, AB, C, and D**? If you haven't already commented them all, we hope you'll take some time to do so. In order to work towards a solution, we need to know what you like and do not like about the various alternatives, as well as any changes you can make to improve them.

Need An Alternatives Freshener?
Check out the online open house here:
www.sewardglennconnection.com

Your input is CRITICAL to the success of the PEL Study!
We hope you will take time to review the alternatives and share your feedback. The last day to submit your comments is **Friday, February 28, 2025**.

Questions or Comments?

PHONE: (907) 206-2289
EMAIL: info@sewardglennconnection.com
For project information, visit www.sewardglennconnection.com

¿Habla español? ¿Koj has lus hemod? ¿E le taubale samod? (907) 206-2289 | info@sewardglennconnection.com

This planning document may be adopted as a subsequent environmental review process in accordance with 23 U.S.C. 105, Department of Transportation Planning and Environmental Review. The environmental review, consultation, and other actions required by applicable federal environmental laws for this project are being, or have been, carried out by DOT/FAA pursuant to 23 U.S.C. 105 and a Memorandum of Understanding dated April 15, 2022, and executed by DOT/FAA and the Alaska Department of Transportation and Public Facilities (DOT/PAF).

It is the policy of DOT/PAF that no one shall be subjected to discrimination on the basis of race, color, national origin, sex, age, or disability. Persons who believe they may have experienced discrimination in the delivery of these federally assisted programs or activities may file a complaint with Alaska DOT/PAF Civil Rights Office, 2000 West 42nd Avenue, Room 300, Anchorage, AK 99509. Phone: 907-265-0801; e-mail: civilrights@dot.alaska.gov; or 1-800-475-2777. Fax: 907-265-0801.

Copyright © 2025 Seward Glenn Connection. All rights reserved.

Our mailing address is:
Seward to Glenn Connection PEL Study
902 S. 2nd Ave. Ste 300
Anchorage, AK 99501-4700

Want to change how you receive these emails?
You can update your preferences or unsubscribe from this list.

ALASKA DOT/PAF

Seward + Glenn CONNECTION

Seward to Glenn Connection Planning and Environmental Linkages (PEL) Study

WE WANT TO HEAR FROM YOU!

**Comment Period: Refined Alternatives
Comment Period
EXTENSION**

SHARE YOUR COMMENTS TODAY! Dec 10, 2024 - Feb 28, 2025

39 Days Left!

The comment period for the Seward to Glenn Connection PEL Study launched on December 10, 2024, and was originally scheduled to close 45 days later on January 25. In response to requests from project area community groups and individuals, comments are now being accepted through February 28.

Refined alternatives and a draft detailed alternatives report for the Seward to Glenn Connection PEL are available now for your review and feedback.

The nearly 300 comments during the previous public comment period led to some key design changes, including elimination of freeways. The refined alternatives include smaller, slower speed, more robustly developed pathway road designs, as well as an updated version of the Metropolitan Transportation Plan design alternatives that reflects Fairview's preferred main street concept on Central and includes ideas for reducing traffic through implementation of, for example, increased transit and remote work.

Need An Alternatives Freshener?
Check out the online open house here:
www.sewardglennconnection.com

Your input is CRITICAL to the success of the PEL Study!
We hope you will take time to review the alternatives and share your feedback. The last day to submit your comments is **Friday, February 28, 2025**.

Questions or Comments?

PHONE: (907) 206-2289
EMAIL: info@sewardglennconnection.com
For project information, visit www.sewardglennconnection.com

¿Habla español? ¿Koj has lus hemod? ¿E le taubale samod? (907) 206-2289 | info@sewardglennconnection.com

This planning document may be adopted as a subsequent environmental review process in accordance with 23 U.S.C. 105, Department of Transportation Planning and Environmental Review. The environmental review, consultation, and other actions required by applicable federal environmental laws for this project are being, or have been, carried out by DOT/FAA pursuant to 23 U.S.C. 105 and a Memorandum of Understanding dated April 15, 2022, and executed by DOT/FAA and the Alaska Department of Transportation and Public Facilities (DOT/PAF).

It is the policy of DOT/PAF that no one shall be subjected to discrimination on the basis of race, color, national origin, sex, age, or disability. Persons who believe they may have experienced discrimination in the delivery of these federally assisted programs or activities may file a complaint with Alaska DOT/PAF Civil Rights Office, 2000 West 42nd Avenue, Room 300, Anchorage, AK 99509. Phone: 907-265-0801; e-mail: civilrights@dot.alaska.gov; or 1-800-475-2777. Fax: 907-265-0801.

Copyright © 2025 Seward Glenn Connection. All rights reserved.

Our mailing address is:
Seward to Glenn Connection PEL Study
902 S. 2nd Ave. Ste 300
Anchorage, AK 99501-4700

Want to change how you receive these emails?
You can update your preferences or unsubscribe from this list.

ALASKA DOT/PAF

Seward + Glenn CONNECTION

Seward to Glenn Connection Planning and Environmental Linkages (PEL) Study

Halfway Over!
Dec. 10, 2024 - Jan. 23, 2025

Share your Comments Today!

25 Days Left!

The Seward to Glenn Connection PEL Study has presented refined alternatives and a draft detailed alternatives report that include a No-Action alternative and a Metropolitan Transportation Plan alternative that does not feature a highway connection.

We want your feedback again! Why?
Because your input makes a difference in shaping the future!

Need An Alternatives Freshener?
Check out the online open house here:
www.sewardglennconnection.com

Your input is CRITICAL to the success of the PEL Study! We hope you will take time to review the alternatives and share your feedback. The last day to submit your comments is **Monday, January 23, 2025**. You have 25 days left - GO!

Questions or Comments?

PHONE: (907) 206-2289
EMAIL: info@sewardglennconnection.com
For project information, visit www.sewardglennconnection.com

¿Habla español? ¿Koj has lus hemod? ¿E le taubale samod? (907) 206-2289 | info@sewardglennconnection.com

This planning document may be adopted as a subsequent environmental review process in accordance with 23 U.S.C. 105, Department of Transportation Planning and Environmental Review. The environmental review, consultation, and other actions required by applicable federal environmental laws for this project are being, or have been, carried out by DOT/FAA pursuant to 23 U.S.C. 105 and a Memorandum of Understanding dated April 15, 2022, and executed by DOT/FAA and the Alaska Department of Transportation and Public Facilities (DOT/PAF).

It is the policy of DOT/PAF that no one shall be subjected to discrimination on the basis of race, color, national origin, sex, age, or disability. Persons who believe they may have experienced discrimination in the delivery of these federally assisted programs or activities may file a complaint with Alaska DOT/PAF Civil Rights Office, 2000 West 42nd Avenue, Room 300, Anchorage, AK 99509. Phone: 907-265-0801; e-mail: civilrights@dot.alaska.gov; or 1-800-475-2777. Fax: 907-265-0801.

Copyright © 2025 Seward Glenn Connection. All rights reserved.

Our mailing address is:
Seward to Glenn Connection PEL Study
902 S. 2nd Ave. Ste 300
Anchorage, AK 99501-4700

Want to change how you receive these emails?
You can update your preferences or unsubscribe from this list.

ALASKA DOT/PAF

Seward + Glenn CONNECTION

Seward to Glenn Connection Planning and Environmental Linkages (PEL) Study

Feedback Requested!
Dec. 10, 2024 - Jan. 23, 2025
Share your Comments Today!

Join the Online Open House

Public Comment Period
12/10/24 - 1/23/25

Ways to comment:
607.206.2289
info@sewardglennconnection.com
sewardglennconnection.com

Want to learn about what happened earlier this year? No problem!
View all materials at the Public Open House #4. Some highlights include:

- Review the Preliminary Alternatives to see what concepts were presented previously and compare to this updated version today.
- Check out all the comments from the last comment period and how the study team addressed those comments.

One key outcome? We eliminated all highways and freeways because you spoke up and we listened!

View the February 2024 Public Open House #4 and Comment Summary Report.

Questions or Comments?

PHONE: (907) 206-2289
EMAIL: info@sewardglennconnection.com
For project information, visit www.sewardglennconnection.com

¿Hable en español? ¿Kog hien lun hmoed? ¿E to tauala samoa? (907) 206-2289 | info@sewardglennconnection.com

This planning document may be adopted in a subsequent environmental review process in accordance with 23 U.S.C. 118, Integration of Planning and Environmental Review. The environmental review, consultation, and other actions required by applicable Federal environmental laws for this project are being, or have been, carried out by DOTAPF pursuant to 23 U.S.C. 327 and a Memorandum of Understanding dated April 11, 2023, and executed by FHWA and DOTAPF.

It is the policy of the Alaska Department of Transportation and Public Facilities (DOTAPF) that no project shall be subject to discrimination on the basis of race, color, national origin, sex, age, or disability. Persons who believe they may have experienced discrimination in the delivery of these federal-aided programs or activities may file a complaint with Alaska DOTAPF Civil Rights Office (CRO) at 3300 West Anchorage, Alaska 99503. Phone: (907) 269-0901. Alaska Relay 7-11, or 1-800-475-0777. Fax: (907) 269-0907.

Copyright © 2024 Seward Glenn Connection. All rights reserved.

Our meeting address is:
Seward to Glenn Connection PEL Study
362 E. 18th Ave. Ste 500
Anchorage, AK 99501-4199

Want to change how you received these emails?
You can usually find instructions at unsubscribe@sbgm.com

ATTN: watchamp

Seward + Glenn CONNECTION

Seward to Glenn Connection Planning and Environmental Linkages (PEL) Study

Open Now!
Dec. 10, 2024 - Jan. 23, 2025
Share your Comments Today!

Join Us Tonight at the Anchorage Senior Activity Center

Learn more about the five refined alternatives at our public open house tonight at the online open house. A public comment period for the refined alternatives will run from December 10, 2024, through January 23, 2025.

This study will identify and evaluate options to improve safety, livability, regional travel between the Seward and Glenn Highways, and local travel within the surrounding neighborhoods.

Seward to Glenn Connection PEL Refined Alternatives

Public Open House #5 Details
Tuesday, December 10, 2024
4:30 - 6:30 p.m.
Presentation at 5:00 p.m.

Anchorage Senior Activity Center
1300 E. 18th Ave.
Anchorage, AK 99501
People Mover Route 11

Public Comment Period
12/10/24 - 1/23/25

Ways to comment:
In person at the open house
607.206.2289
info@sewardglennconnection.com
sewardglennconnection.com

Can't make the meeting? No problem!
View all materials at the meeting at our online open house available December 11, 2024 - January 23, 2025, at sewardglennconnectiononline.com.

Questions or Comments?

PHONE: (907) 206-2289
EMAIL: info@sewardglennconnection.com
For project information, visit www.sewardglennconnection.com

¿Hable en español? ¿Kog hien lun hmoed? ¿E to tauala samoa? (907) 206-2289 | info@sewardglennconnection.com

This planning document may be adopted in a subsequent environmental review process in accordance with 23 U.S.C. 118, Integration of Planning and Environmental Review. The environmental review, consultation, and other actions required by applicable Federal environmental laws for this project are being, or have been, carried out by DOTAPF pursuant to 23 U.S.C. 327 and a Memorandum of Understanding dated April 11, 2023, and executed by FHWA and DOTAPF.

It is the policy of the Alaska Department of Transportation and Public Facilities (DOTAPF) that no project shall be subject to discrimination on the basis of race, color, national origin, sex, age, or disability. Persons who believe they may have experienced discrimination in the delivery of these federal-aided programs or activities may file a complaint with Alaska DOTAPF Civil Rights Office (CRO) at 3300 West Anchorage, Alaska 99503. Phone: (907) 269-0901. Alaska Relay 7-11, or 1-800-475-0777. Fax: (907) 269-0907.

Copyright © 2024 Seward Glenn Connection. All rights reserved.

Our meeting address is:
Seward to Glenn Connection PEL Study
362 E. 18th Ave. Ste 500
Anchorage, AK 99501-4199

Want to change how you received these emails?
You can usually find instructions at unsubscribe@sbgm.com

ATTN: watchamp

Seward + Glenn CONNECTION

Seward to Glenn Connection Planning and Environmental Linkages (PEL) Study

Public Open House #5 Refined Alternatives

Join Us!
December 10, 2024

Notice of Public Open House & Public Comment Period

The Alaska Department of Transportation & Public Facilities (DOTAPF) is holding a fifth public open house to share refined alternatives for the Seward to Glenn Planning and Environmental Linkages (PEL) Study after receiving over 200 comments this spring. The public open house is on Tuesday, December 10, at the Anchorage Senior Activity Center from 4:30 - 6:30 p.m.

A public comment period for the refined alternatives will run from December 11, 2024, through January 23, 2025.

This study will identify and evaluate options to improve safety, livability, regional travel between the Seward and Glenn Highways, and local travel within the surrounding neighborhoods.

Seward to Glenn Connection PEL Refined Alternatives

Public Open House #5 Details
Tuesday, December 10, 2024
4:30 - 6:30 p.m.
Presentation at 5:00 p.m.

Anchorage Senior Activity Center
1300 E. 18th Ave.
Anchorage, AK 99501
People Mover Route 11

Can't make the meeting? No problem!
View all materials at the meeting at our online open house available December 11, 2024 - January 23, 2025, at sewardglennconnectiononline.com.

Questions or Comments?

PHONE: (907) 206-2289
EMAIL: info@sewardglennconnection.com
For project information, visit www.sewardglennconnection.com

¿Hable en español? ¿Kog hien lun hmoed? ¿E to tauala samoa? (907) 206-2289 | info@sewardglennconnection.com

This planning document may be adopted in a subsequent environmental review process in accordance with 23 U.S.C. 118, Integration of Planning and Environmental Review. The environmental review, consultation, and other actions required by applicable Federal environmental laws for this project are being, or have been, carried out by DOTAPF pursuant to 23 U.S.C. 327 and a Memorandum of Understanding dated April 11, 2023, and executed by FHWA and DOTAPF.

It is the policy of the Alaska Department of Transportation and Public Facilities (DOTAPF) that no project shall be subject to discrimination on the basis of race, color, national origin, sex, age, or disability. Persons who believe they may have experienced discrimination in the delivery of these federal-aided programs or activities may file a complaint with Alaska DOTAPF Civil Rights Office (CRO) at 3300 West Anchorage, Alaska 99503. Phone: (907) 269-0901. Alaska Relay 7-11, or 1-800-475-0777. Fax: (907) 269-0907.

Copyright © 2024 Seward Glenn Connection. All rights reserved.

Our meeting address is:
Seward to Glenn Connection PEL Study
362 E. 18th Ave. Ste 500
Anchorage, AK 99501-4199

Want to change how you received these emails?
You can usually find instructions at unsubscribe@sbgm.com

ATTN: watchamp

Seward + Glenn CONNECTION

Seward to Glenn Connection Planning and Environmental Linkages (PEL) Study

You spoke up and we heard!

The Seward to Glenn Connection Planning and Environmental Linkages (PEL) Study has refined the alternatives presented earlier this year, and we are ready to share how your comments have been considered in developing a solution that works for the community.

A public open house will be held on December 10 with an associated public comment period running through January 23.

SAVE THE DATE

Seward to Glenn Connection PEL Public Open House #5 & Public Comment Period

Public Open House
Tuesday, December 10
4:30 - 6:30 p.m.
Presentation at 5:00 p.m.

Anchorage Senior Activity Center
1300 E. 18th Ave.
Anchorage, AK 99501
People Mover Route 11

Public Comment Period
12/10/24 - 1/23/25

An official announcement with full meeting and comment period details will be sent before the Thanksgiving holiday.

What happened earlier this year?
Check out our archived online open house [here](http://sewardglennconnection.com) or view the PEL Study schedule at the bottom of the website page [here](http://sewardglennconnection.com).

Questions or Comments?

PHONE: (907) 206-2289
EMAIL: info@sewardglennconnection.com
For project information, visit www.sewardglennconnection.com

¿Hable en español? ¿Kog hien lun hmoed? ¿E to tauala samoa? (907) 206-2289 | info@sewardglennconnection.com

This planning document may be adopted in a subsequent environmental review process in accordance with 23 U.S.C. 118, Integration of Planning and Environmental Review. The environmental review, consultation, and other actions required by applicable federal environmental laws for this project are being, or have been, carried out by DOTAPF pursuant to 23 U.S.C. 327 and a Memorandum of Understanding dated November 3, 2017, and executed by FHWA and DOTAPF.

Copyright © 2024 Seward Glenn Connection. All rights reserved.

Our meeting address is:
Seward to Glenn Connection PEL Study
362 E. 18th Ave. Ste 500
Anchorage, AK 99501-4199

Want to change how you received these emails?
You can usually find instructions at unsubscribe@sbgm.com

ATTN: watchamp

OUTREACH - FLYER



Seward to Glenn Connection PEL Study

Refined Alternatives

We have refined alternative designs for the Seward to Glenn Connection Planning and Environmental Linkages (PEL) Study based on your input this past spring. We are seeking your feedback again.



This planning document may be adopted in a subsequent environmental review process in accordance with 23 U.S.C. 168 Integration of Planning and Environmental Review. The environmental review, consultation, and other actions required by applicable Federal environmental laws for this project are being, or have been, carried out by DOT&PF pursuant to 23 U.S.C. 327 and a Memorandum of Understanding dated April 13, 2023, and executed by FHWA and DOT&PF.

It is the policy of the Alaska Department of Transportation and Public Facilities (DOT&PF) that no one shall be subject to discrimination on the basis of race, color, national origin, sex, age, or disability. Persons who believe they may have experienced discrimination in the delivery of these federally assisted programs or activities may file a complaint with: Alaska DOT&PF Civil Rights Office 2200 East 42nd Avenue, Room 310, Anchorage, AK 99508; Phone: 907-269-0851, Alaska Relay 7-1-1, or 1 (800) 676-3777; Fax: 907-269-0847.

The Anchorage School District does not endorse these materials or the viewpoints expressed in them.

We want to hear your voice!

Join us for one or all of the following project activities:

Public Open House #5

Tuesday, December 10, 2024

Anchorage Senior Activity Center
1300 E 19th Avenue
Anchorage, AK 99501
People Mover Route 11
4:30 – 6:30 p.m.
Presentation at 5 p.m.



Online Open House

12/11/24 – 1/23/25
qrcodes.pro/LgzMKv

Public Comment Period

12/10/24 - 1/23/25

Ways to Comment:



907.206.2289



info@sewardglennconnection.com



sewardglennconnection.com



ATTACHMENT D: PUBLIC MEETING PRESENTATION

PRESENTATION



Scan the QR code with your smartphone or visit sewardglennconnection.com/getinvolved.html to view an electronic version of the materials below.

Seward to Glenn Connection PEL Study

Open House #5

Refined Alternatives
December 10, 2024

Meeting Agenda

- Orientation**
 - Why are we here?
 - Why the Seward to Glenn PEL study?
 - The problems we're trying to solve
 - What we learned from you
 - Refined Alternatives
- Breakout/Poster Session**
 - Independent poster tour
 - Alternatives & Key Topics stations:
 - One-on-one with the project team
 - Q&A
 - Share your feedback!

We want to hear from you! Visit the Online Open House sewardglennconnectiononline.com

WELCOME!

Why Are We Here?

Meeting Purpose & Next Steps

Purpose:

- Update on what we learned
- How we used that information to refine our process and the alternatives
- Share and introduce the updated (i.e., refined) alternatives

Results and Next Steps:

- The project team will use all feedback to further refine or rule-out alternatives
- Next public open house and comment period:
 - 1st quarter of 2025
 - Last round of refined alternatives
 - Recommended alternative based on public input, traffic analysis, cost, & impacts

How We Work Together

- During the presentation...
 - Think of topics you'd like to discuss during the poster session
- During the poster session...
 - Ask questions of the project team
 - Collaborate to help deliver the best outcome for the community
- Before you leave...
 - Provide detailed WRITTEN comments about each alternative & ideas for changes

Compromise Is Key

<p>Improve safety</p>	<p>Reduce regional and local travel conflicts</p>	<p>Consider the needs of all users (automobiles, bicycles, and pedestrians)</p>	<p>Maintain National Highway System</p>	<p>Improve the ability to move safely and efficiently when accessing key destinations</p>
-----------------------	---	---	---	---

Port access routing: Improve access between the Port and the highway while also reducing neighborhood impacts

Usability: Help reconnect the neighborhood (provide and remove) by removing or separating regional and Port traffic from local traffic. Improve quality of life, and promote economic development.

Accommodate ideas from adopted plans:

- Gambell Main Street Redevelopment
- Legis Greenway Supportive Development Corridor
- Improvements for pedestrians and bicyclists
- Reconnecting Communities Grant

Why Seward to Glenn Connection PEL?

Photo: Loren Holmes/ABN

The Study Area & Drivers

Legend:

- Port of Alaska
- Denali
- Chena River
- Chena River
- Chena River

- Connection between the highways
- Connection to the port
- Answer the questions left unanswered by H2H

NHS Definition & Purpose

National Highway System (NHS)

- High volumes
- Heavy truck volumes
- Regional, longer distance trip-making
- State and national importance

Regional Connections - NHS

Legend:

- Port of Alaska
- Denali
- Chena River
- Chena River
- Chena River

Port travel

Regional Connections - NHS

Legend:

- Port of Alaska
- Denali
- Chena River
- Chena River
- Chena River

Travel to Employment Centers from outside study area

Regional Connections - NHS

Legend:

- Port of Alaska
- Denali
- Chena River
- Chena River
- Chena River

Airport traffic

Regional Connections - NHS

Legend:

- Port of Alaska
- Denali
- Chena River
- Chena River
- Chena River

Intermodal Facilities

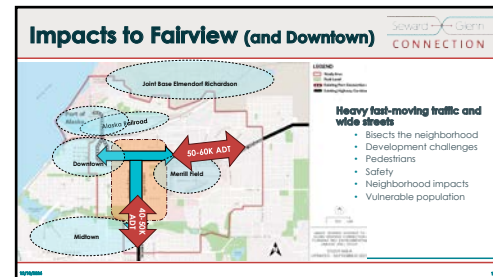
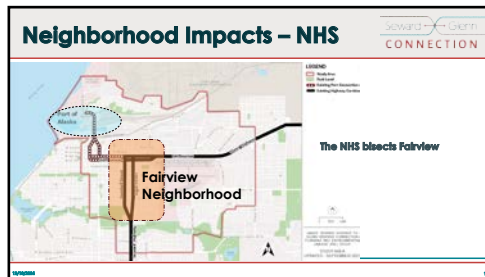
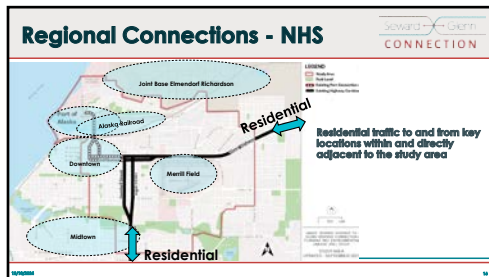
Rail and other intermodal facilities

Regional Connections - NHS

Legend:

- Port of Alaska
- Denali
- Chena River
- Chena River
- Chena River

Traffic associated with JBER



Balancing Issues & Challenges

- Improve safety
- Reduce regional and local (intra-neighborhood) travel conflicts
- Consider needs of all users
- Maintain national highway system (NHS) functionality
- Improve port access to the NHS
- Improve livability
 - Accommodate adopted plans
 - Gambell main street
 - Ingra greenway supportive development corridor
 - Fairview greenway/woonerf
 - Promote investment in neighborhood

What We Learned from You Last Round... And What We're Doing About It!

Alternatives Development Study Status Update

WE ARE HERE Refined Alternatives Dec 2024

Timeline: Alternatives Workshop Feb 2023, Alternatives Public Meeting May 2023, Alternatives Public Meeting Feb 2024, Initial Alternatives Screening May-Sept 2024.

- Project Committees
- AMATS Committees
- Community and 1 on 1 meetings

Why Study Freeway Connections?

People questioned why we were studying a freeway connection

- Long-standing question
- Freeway connection was the recommended solution in the current Fairview plan
- Fairview indicated that:
 - Uncertainty left development in limbo
 - Uncertainty had economic impacts
 - At workshop 1, Fairview indicated their preferred solution continued to be the depressed freeway

We Heard You!

What We Heard

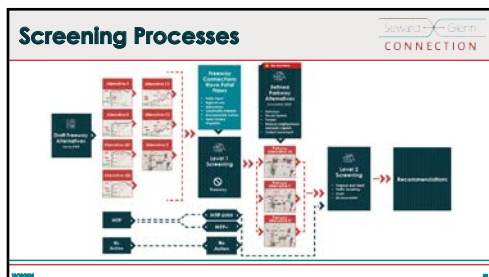
- Concerns for neighborhood impacts noise, air, environmental justice, right-of-way (ROW), and property values
- Concern about ROW impacts (residential and commercial)
- Concern for park impacts/ support for All ID
- General sentiment against freeway options: questioning whether a freeway is needed

What We Did About It

- Screened out/eliminated high-impact freeways
- Reduce ROW impacts with tunnels, parkways, and at-grade intersections
- Reduce footprint
- Slower speed allows better park avoidance and reduces noise
- Shift road further away from green spaces and homes
- Created a parkway connection for regional traffic
- Created at-grade intersections
- Reduced speeds and number of lanes
- Reduced ROW impacts with tunnels
- Added MTP alternative

We Heard You!

We reprioritized the screening criteria to reflect your input



Screening Data for Alternatives

Alternative	Screening Criteria	Score
Freeway	Highway Functionality	High
	Neighborhood Impacts	Low
	Development Potential	Medium
	Community Support	Low
Parkway	Highway Functionality	Medium
	Neighborhood Impacts	High
	Development Potential	High
	Community Support	High
Main Street	Highway Functionality	Low
	Neighborhood Impacts	High
	Development Potential	High
	Community Support	High

We Heard You!

So, are we recommending a freeway connection?

No! Freeway Connections are Out

Refined Alternatives!

We Heard You!

You said... "We don't want a freeway, we support the MTP!"

Does it solve the problem?

MTP 2050

- Lane reductions 5th, 6th, Gambell, Ingra, 15th
- 6-Lane couplet (Gambell-Ingra)
- Complete streets
- No Glenn-Seward Highway connection

Does the MTP 2050 Solve the Problem?

Our questions?

- Is a 6-lane couplet the "Mainstreet" envisioned by the community?
- Will the MTP reduce neighborhood traffic impacts while maintaining the functionality of the National Highway System?
 - If not, can we enhance the MTP with other ideas to make it work

We workshopped the questions...

Is a 6-lane Couplet the "Mainstreet" Envisioned by the Community?

Gambell Street

Ingra Street

No Action (4-Lane, 1-way)

MTP 2050 (3-Lane, 1-way)

Main Streets (2-Lane, 2-way)

What About the Traffic?

Will it reduce neighborhood traffic impacts and maintain the functionality of the National Highway System?

Where will the traffic go?

Will it create new problems in different neighborhoods?

5th Avenue 4-Lane Capacity

Demand = 60,000 Trips per Day

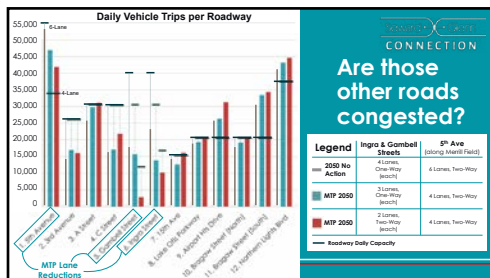
Capacity (4-lane) = 33,000 Trips per Day

Overflow = 27,000 Trips per Day

27,000 Trips Over Capacity Every Day

Where does that traffic go?

When you pull lanes off the NHS (Ingra, Gambell, & 5th Ave)



You Asked: "Can We Enhance the MTP to Solve the S-G PEL Problems?"

What about:

- Transit improvements?
- Reducing demand with prices or incentives
- What about policy changes?

MTP Plus Alternative

Objective: Get 27,000 trips per day onto other modes

We Heard You; You Said...

- We don't want a freeway connection
- We want slower speeds
- We want fewer neighborhood and park impacts
- We want to enhance livability
- Can you use tunnels?

Strategies

- Slower speeds
- Go under to avoid surface impacts
- Divert trucks to and from the port - away from neighborhoods
- Reroute to avoid important features
- Improve streetscapes

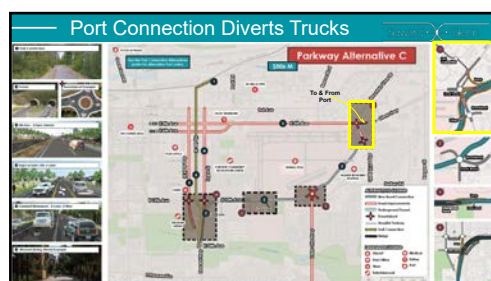
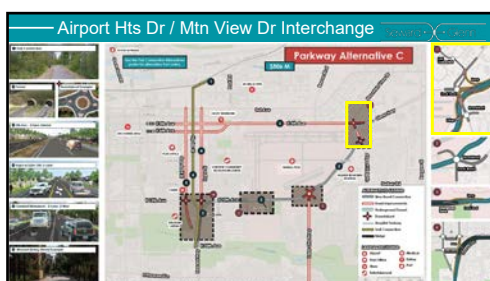
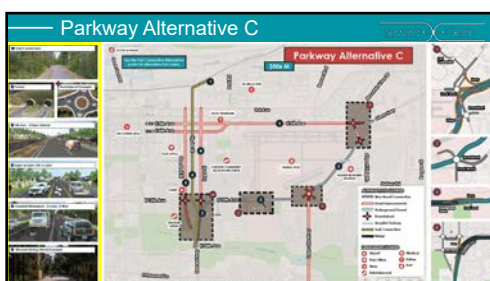
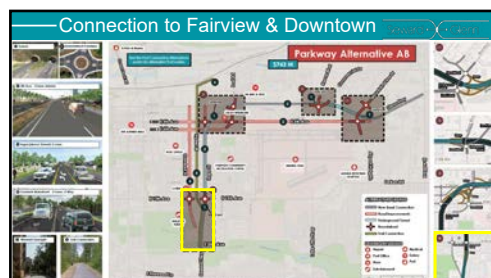
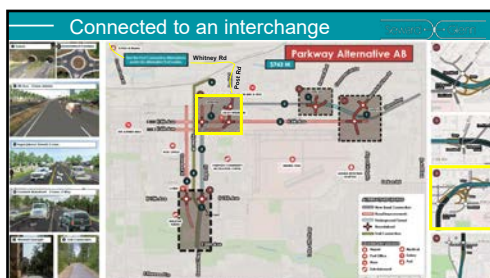
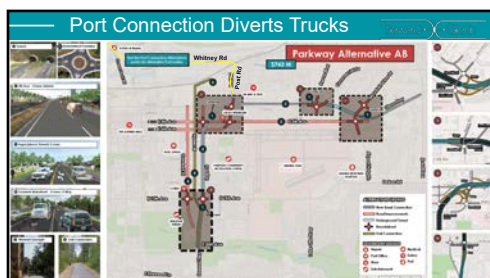
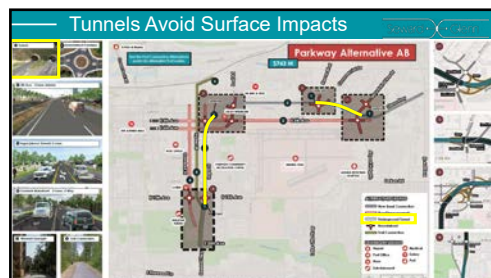
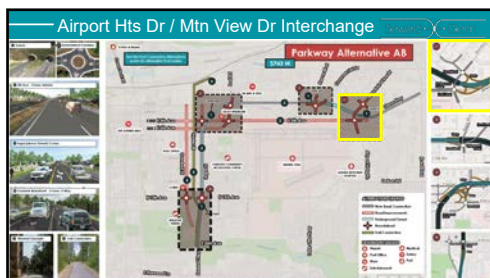
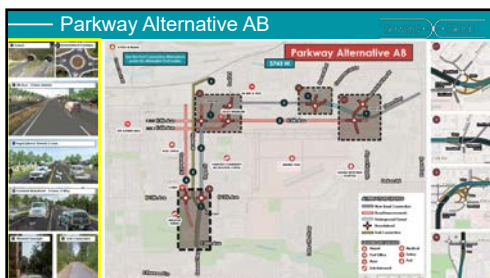
Freeway vs. Parkway

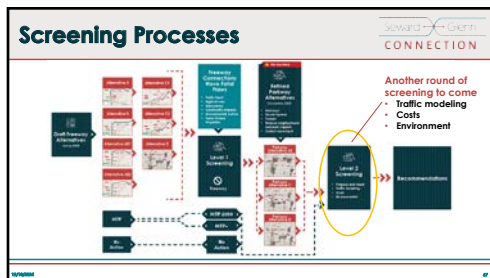
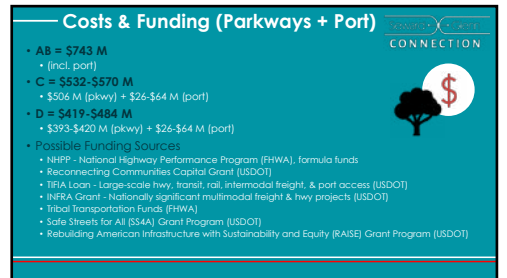
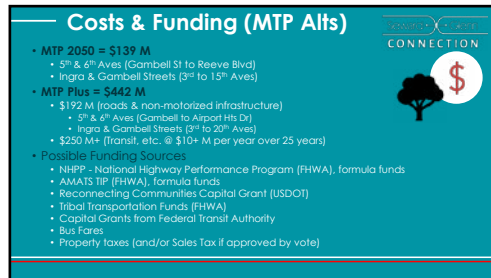
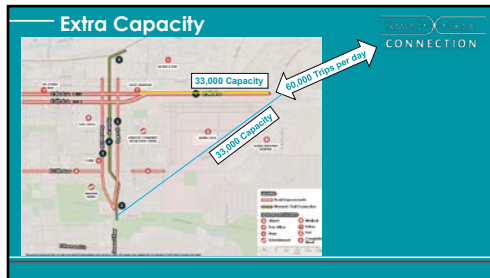
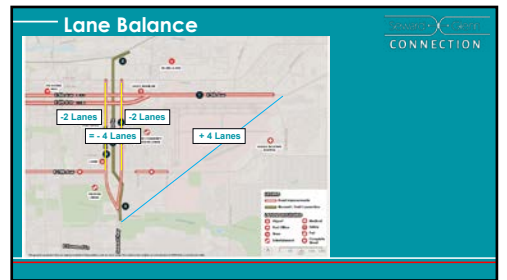
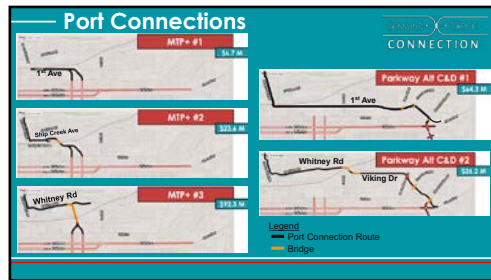
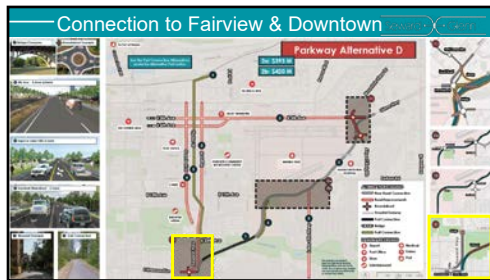
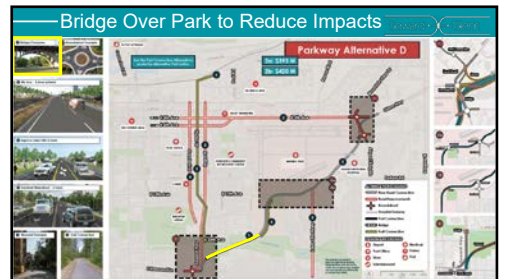
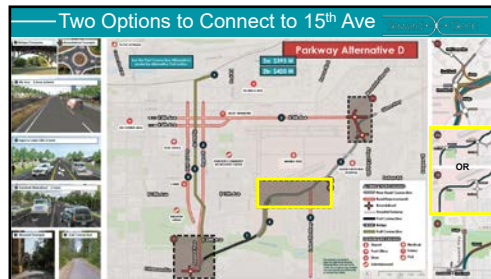
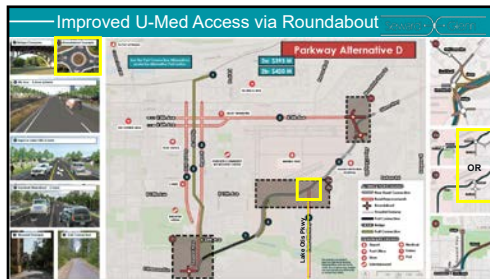
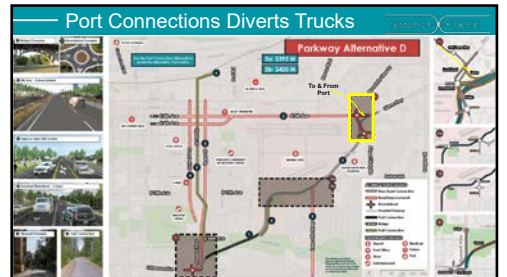
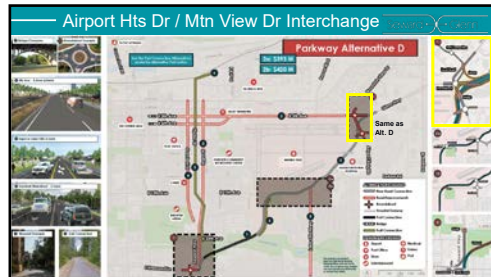
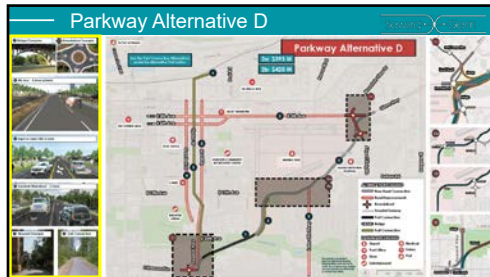
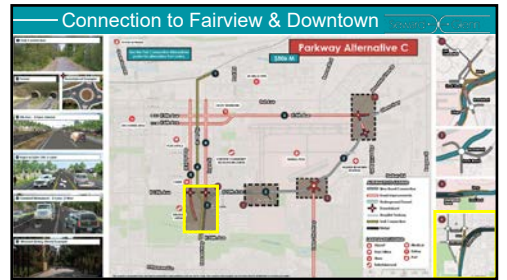
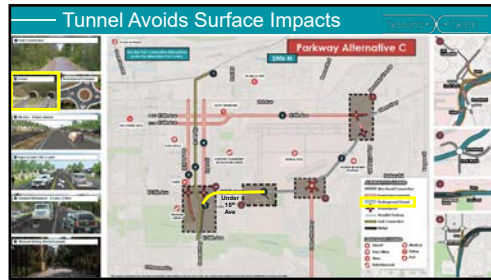
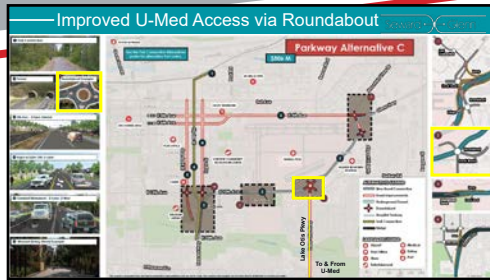
Outdated Freeway Alternative

- Six 12-foot Freeway Lanes
- 55 MPH
- Fenced Right-of-Way
- Interchanges
- No sidewalks or bike paths
- Minimal landscaping
- 150-200 foot Right-of-Way


New Parkway Design

- Four 11-foot Parkway Lanes
- 40-45 MPH
- Local Right-of-Way
- Roundabouts or signals
- Sidewalks or separated paths
- Robust landscaping
- 100-125 foot Right-of-Way







We Want Your Input!



PUBLIC COMMENT PERIOD:
December 10, 2024 – January 23, 2025



VISIT OUR ONLINE OPEN HOUSE
sewardglennconnectiononline.com
December 11, 2024 – January 23, 2025



ONLINE
sewardglennconnection.com
BY EMAIL
Info@sewardglennconnection.com
BY PHONE
(907) 264-2289



ATTACHMENT E: PUBLIC MEETING POSTERS

POSTERS



Scan the QR code with your smartphone or visit sewardglennconnection.com/getinvolved.html to view an electronic version of the materials below.



The Study

What is the purpose of the PEL Study?

Its purpose is to "Identify and evaluate options to improve **livability, safety, access, and connectivity** between the **Seward Highway, near 20th Avenue** and the **Glenn Highway, east of Airport Heights and Mountain View Drives**. The project will also identify ways to improve **access to and from the Port of Alaska** to the interstate highway network."

What is a Planning and Environmental Linkages (PEL) Study?

A PEL Study considers environmental, community, and economic goals during planning so that the information and analysis can be used in the environmental process.

SEWARD TO GLENN CONNECTION PEL STUDY

Purpose & Need

The project's purpose is to improve mobility, accessibility, safety, and livability for people and goods traveling on or across the roadway system connecting the Seward Highway, Glenn Highway, and Port of Alaska by all modes (including people on foot, bicycles, or buses) while improving community cohesion. The intent is to (1) maintain the functionality of the National Highway System while meeting the local travel needs of residents who live, play, and work in the area and must safely travel across or along those roadways; and (2) improve neighborhood connections, enhance quality of life, and accommodate adopted plans, as practicable.

The needs are presented below (in no specific order):

Reduce Conflicting Travel Functions

Serving competing regional and local travel functions on the highway network in the study area leads to conflicts that reduce mobility, safety, and accessibility for all users.

Improve Safety

Crashes between vehicles and people walking or bicycling are elevated at several study area intersections.

Promote Social Equity and Economic Development

Current highway and parkway design on the Seward/Glenn Highway corridor in the study area is inconsistent with the vision expressed in recently adopted plans. Those plans envision improving neighborhood redevelopment, community cohesion, and quality of life.

These needs are presented in neither order of importance nor order of priority.

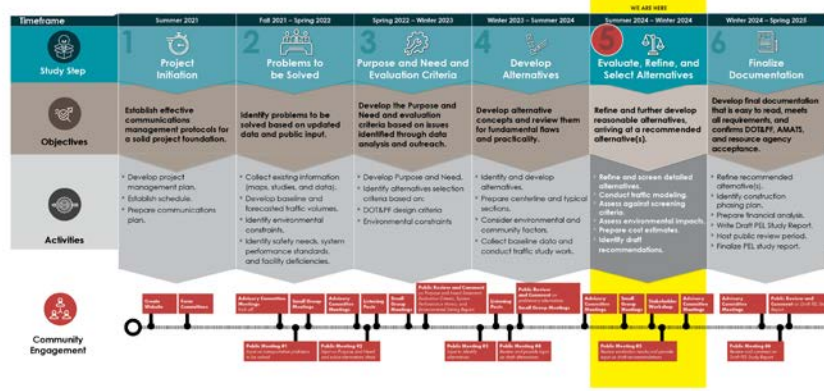
This planning document may be adopted in a subsequent environmental review process in accordance with 23 USC 168, Integration of Planning and Environmental Review. The environmental review, consultation, and other actions required by applicable Federal environmental laws for this project are being, or have been, carried out by DOT&F pursuant to 23 USC 327 and a Memorandum of Understanding dated November 3, 2017, and executed by FHWA and DOT&F.



SEWARD TO GLENN CONNECTION PEL STUDY

Project Schedule

We are now in Phase 5 of the PEL Study. During this phase, we will review the evaluation results from the public meetings, Advisory Committee Meetings, Small Group Meetings and Stakeholder Workshops and provide input on draft recommendations.



SEWARD TO GLENN CONNECTION PEL STUDY

Balancing the Issues & Challenges



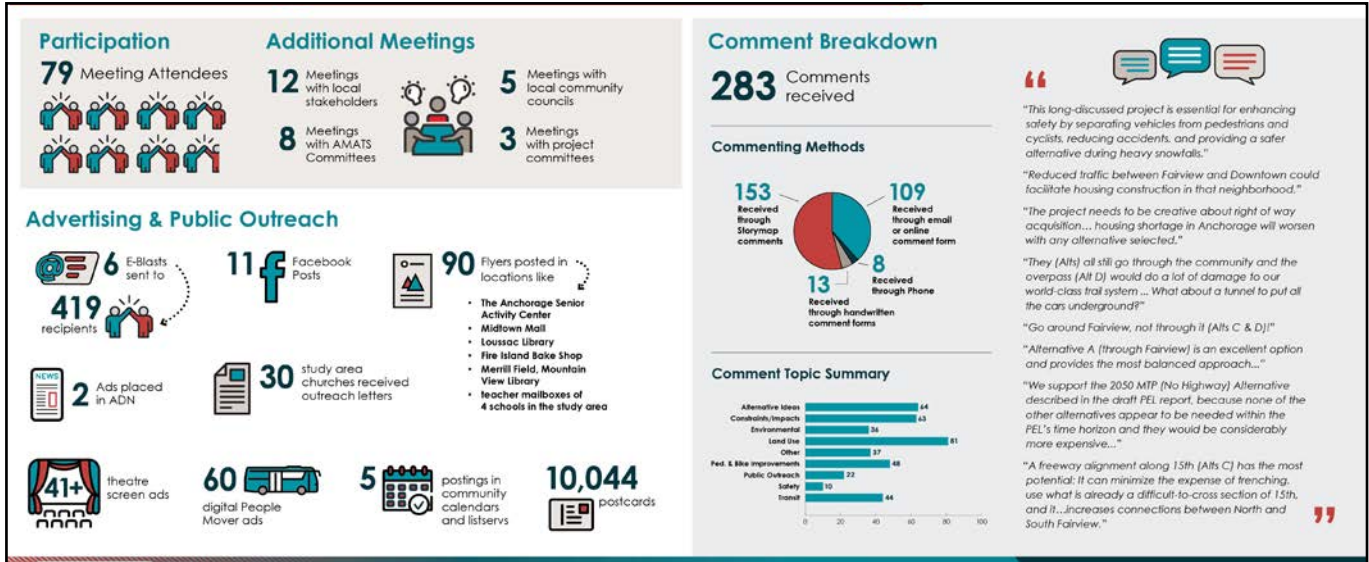
The study team is looking for solutions to solve and balance the corridor's transportation issues and challenges:



Solutions should consider the needs of all user groups (pedestrians, bicyclists, local and regional vehicles, and freight).



SEWARD TO GLENN CONNECTION PEL STUDY



What We Learned & Changes We Implemented

What We Heard

- Concerns for neighborhood impacts: noise, air, environmental justice, right-of-way (ROW), and property values
- Concerns about ROW impacts (residential and commercial)
- Concern for park impacts/ support for Alt D
- General sentiment against freeway options; questioning whether a freeway is needed

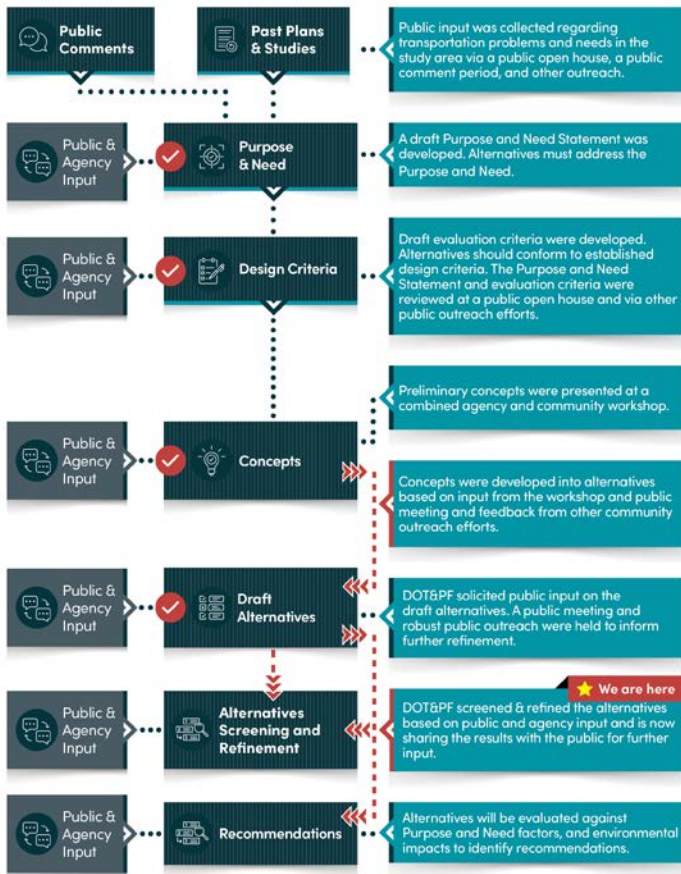
What We Did About It

- Screened-out/eliminated high-impact freeways
- Reduce ROW impacts with tunnels, parkways, and at-grade intersections
- Reduce footprint
- Slower speed allows better park avoidance and reduces noise
- Shift road farther away from green spaces and homes
- Created a parkway connection for regional traffic
- Created at-grade intersections
- Reduced speeds and number of lanes
- Reduced ROW impacts with tunnels
- Added MTP+ alternative



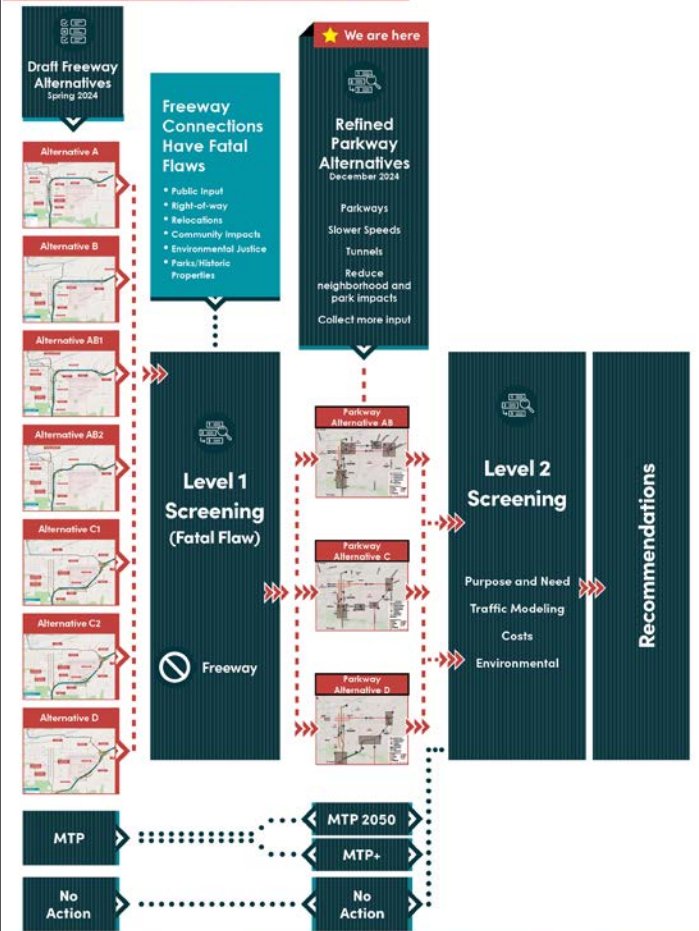
SEWARD TO GLENN CONNECTION PEL STUDY

Alternatives Development Process



SEWARD TO GLENN CONNECTION PEL STUDY

PEL Screening Process

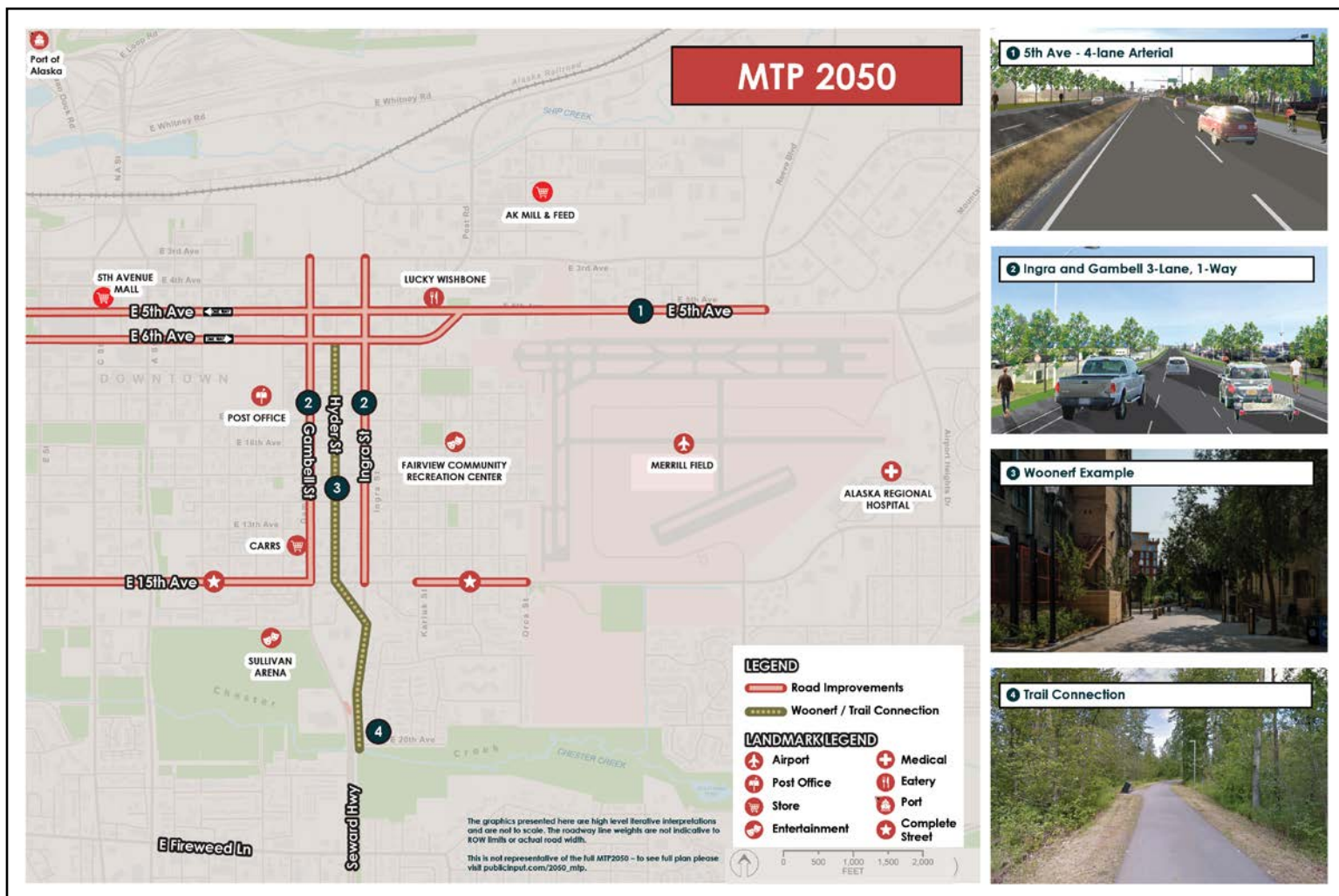
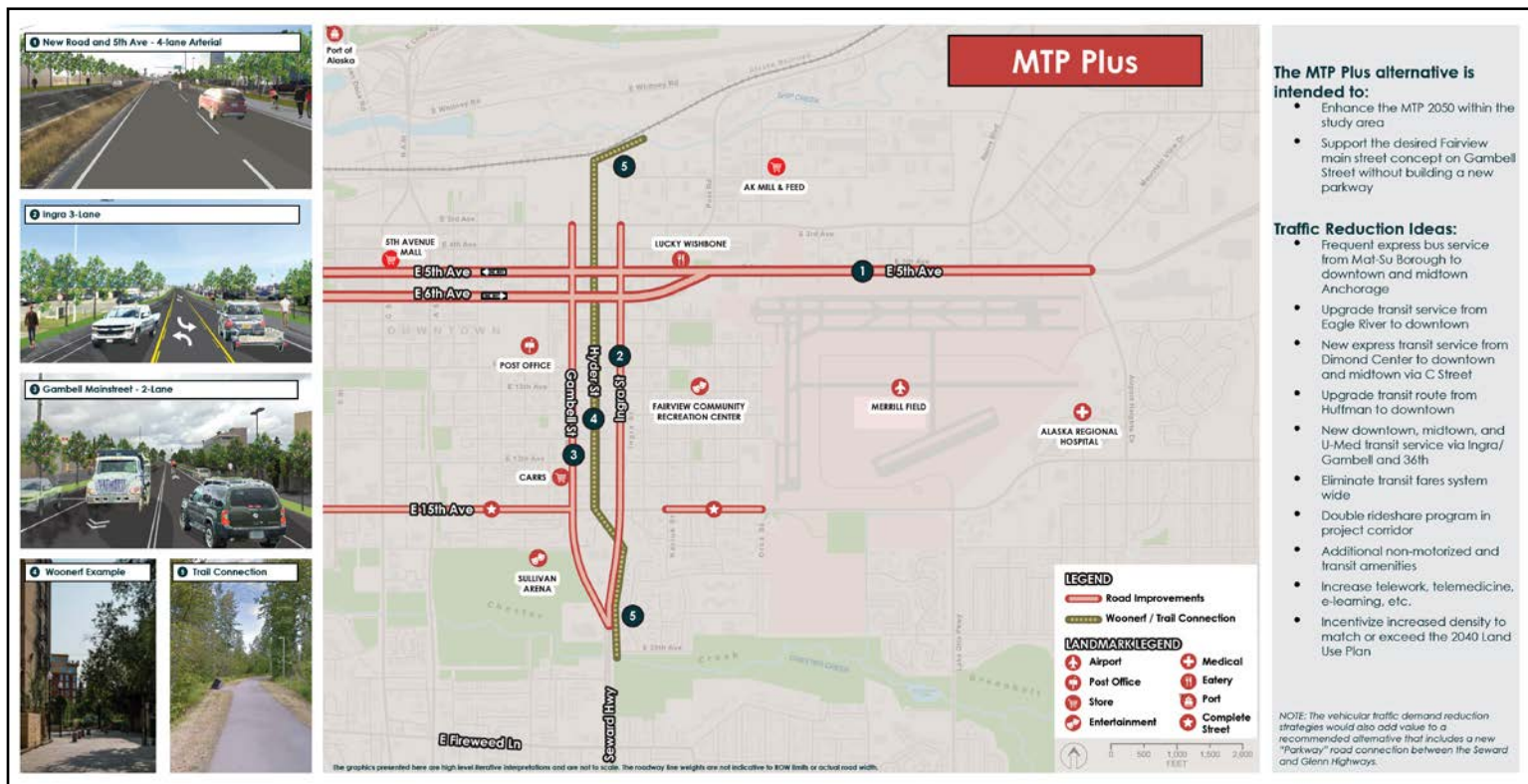


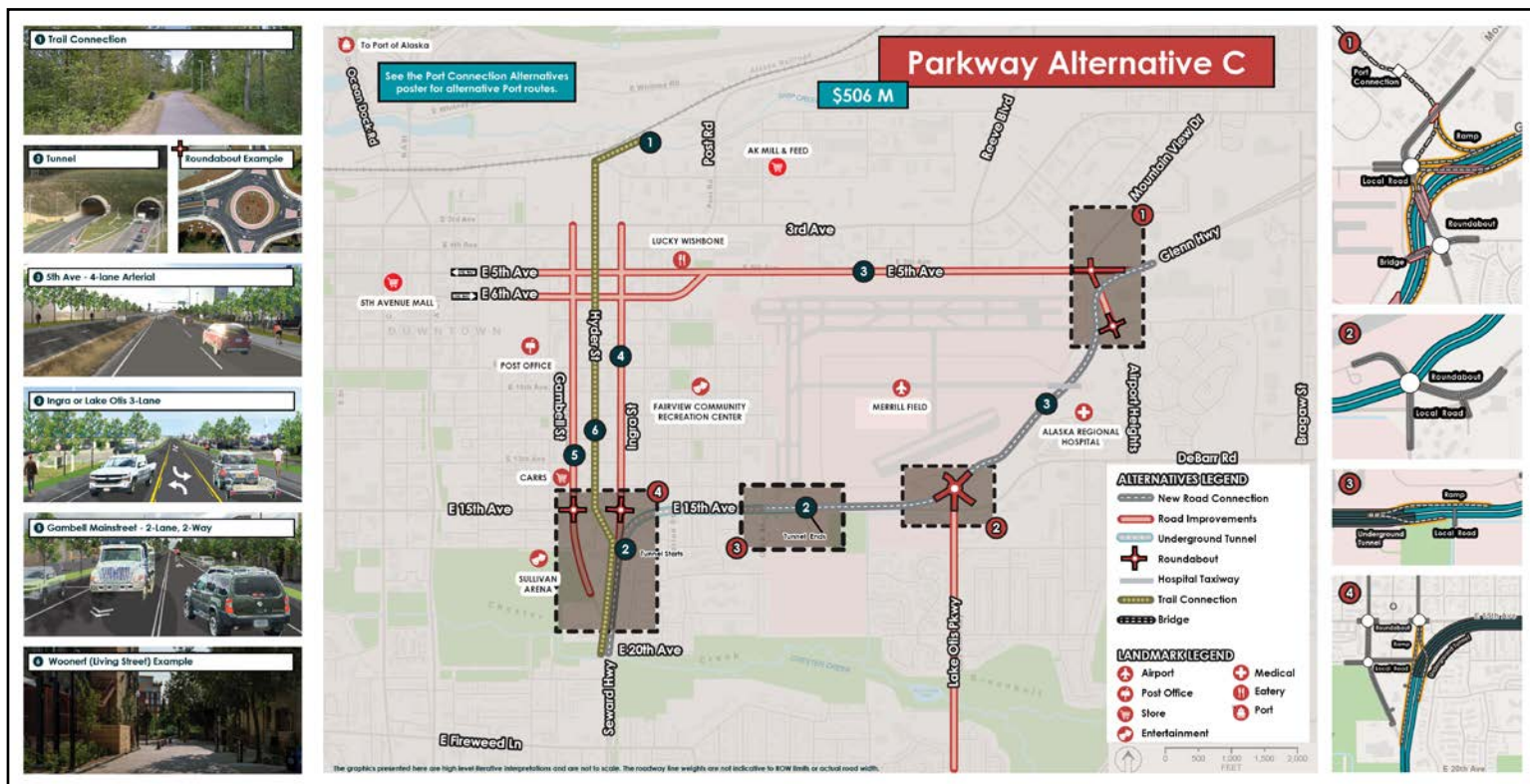
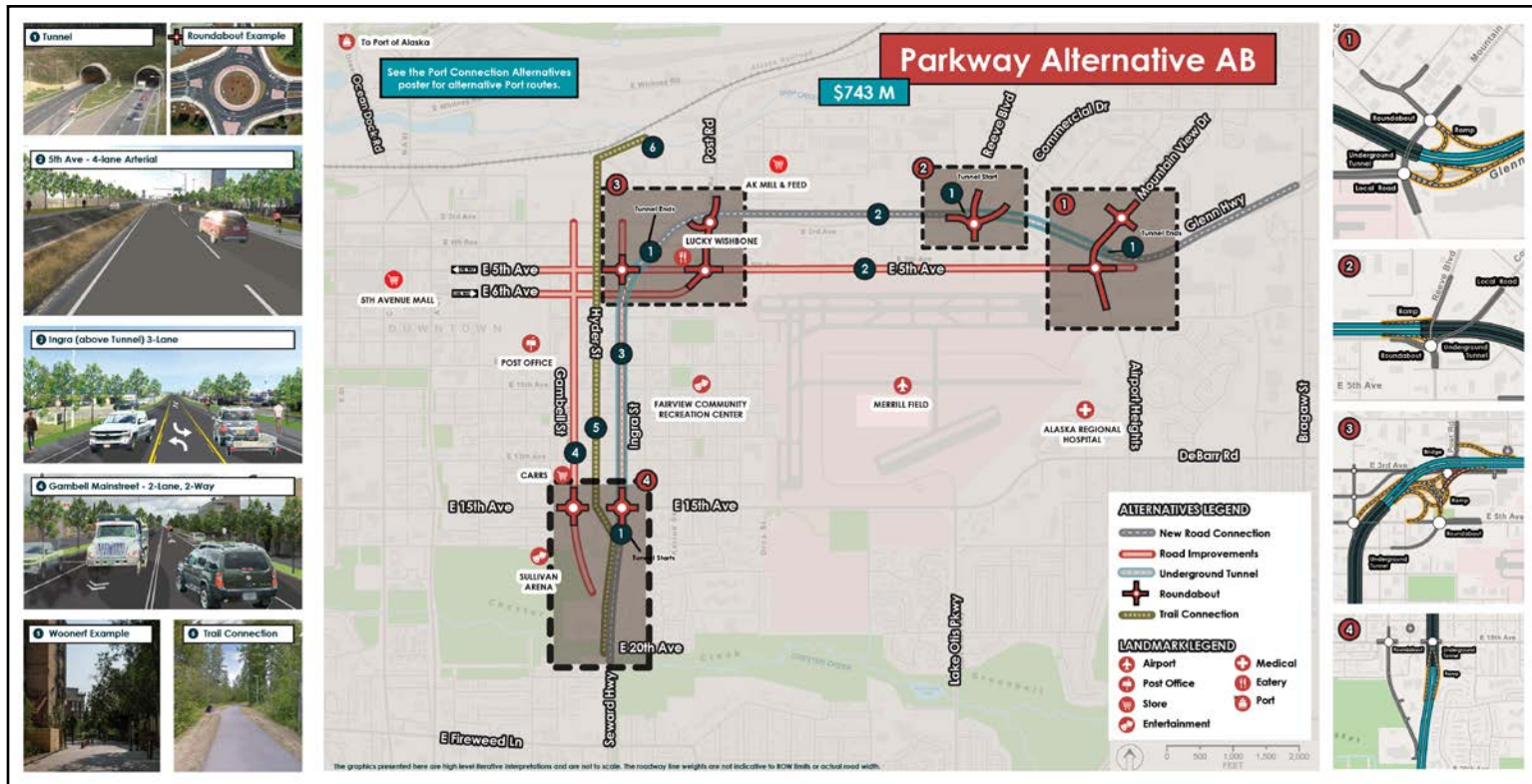
SEWARD TO GLENN CONNECTION PEL STUDY

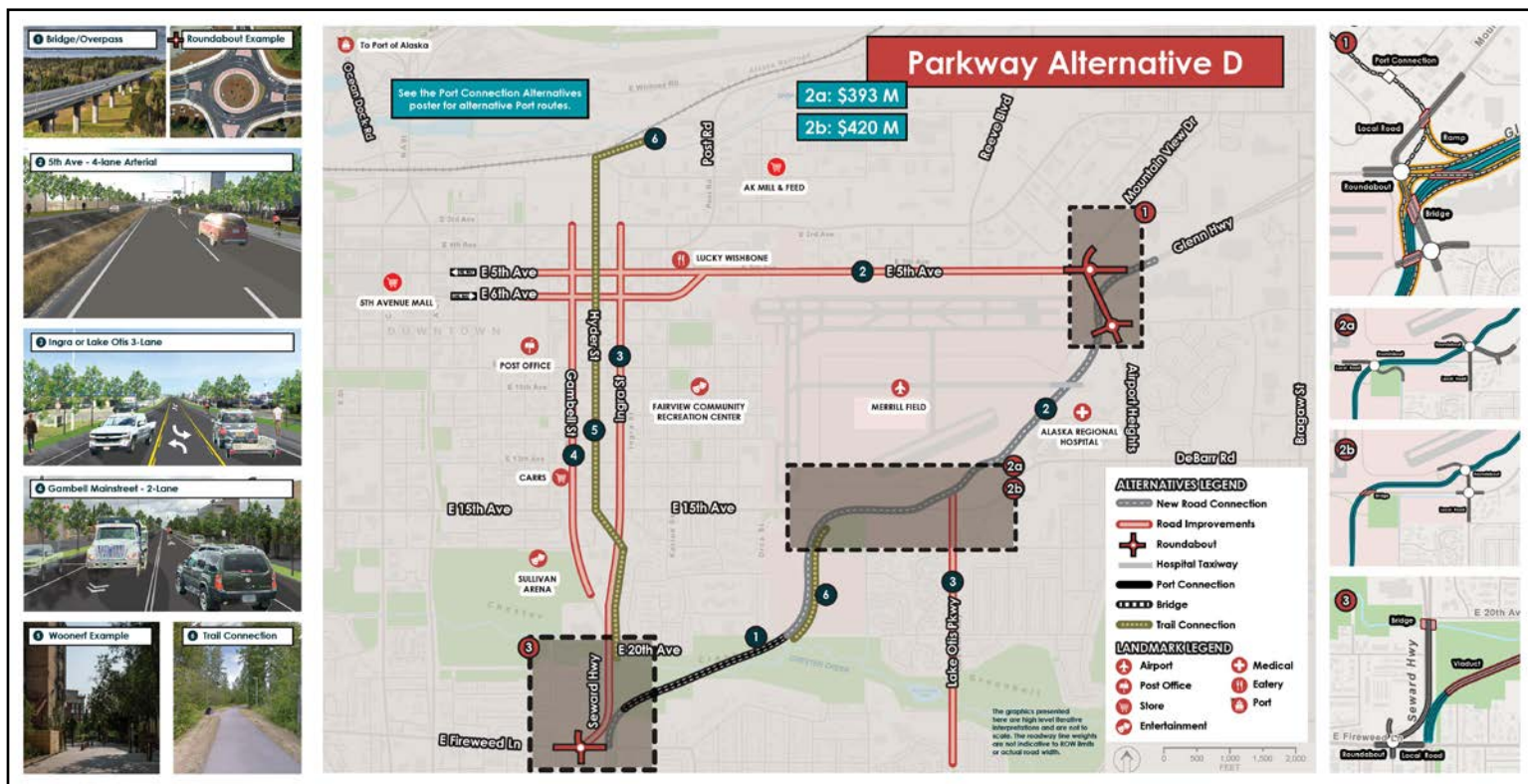
Screening Data for Alternatives

CRITERIA	NO ACTION & MTP ALTERNATIVES			HIGHWAY ALTERNATIVES												PARKWAY ALTERNATIVES			PORT CONNECTION ALTERNATIVES				
	NO ACTION	MTP 2050	MTP +	A	AB 1	AB 2	B	C1	C2	D	AB: PARKWAY	C: PARKWAY	D: PARKWAY	MTP+ #1	MTP+ #2	MTP+ #3	C&D #1	C&D #2					
Relocations																							
Number of residential parcels impacted	None	None	None	High	High	High	High	High	High	High	High	High	High	Low	Low	Low	Low	Low	None	None	None	None	None
Number of residential parcels fully acquired	None	None	None	High	High	High	High	High	High	High	High	High	High	Low	Low	Low	Low	Low	None	None	None	None	None
Potential residential relocations (# of housing units)	None	None	None	Medium	Medium	Medium	Medium	High	High	Medium	High	Low	Low	Low	Medium	Low	Low	Low	None	None	None	None	None
Residential relocations in disadvantaged census tract	None	None	None	Low	Low	Low	Low	High	High	High	High	None	None	None	None	None	None	None	None	None	None	None	None
Residential relocations in census tracts with a housing burden	None	None	None	High	High	Low	Low	Low	Low	Low	Low	None	None	None	None	None	None	None	None	None	None	None	None
Number of non-residential parcels impacted	None	None	None	High	High	High	High	High	High	High	High	Medium	Medium	Low	Low	Low	Low	Low	Medium	Medium	Medium	Low	Low
Number of non-residential parcels to be acquired	None	None	None	High	High	High	High	High	High	High	High	Low	Low	Low	Low	Low	Low	Low	Low	Low	Low	Low	Low
Section 4(f) Impacts																							
Number of parks impacted	None	None	None	Medium	Medium	Medium	Medium	High	High	Medium	High	High	High	High	Medium	Medium	Medium	Medium	None	None	None	None	None
Section 4(f) park impacts (acres)	None	None	None	Low	Low	Low	Low	Medium	Medium	Low	Low	Medium	High	High	High	High	High	High	Low	Low	Medium	None	None
Known historic properties directly impacted	None	None	None	High	High	High	High	High	High	High	High	Medium	Medium	Medium	None	None	None	None	Low	Medium	Low	None	Medium
Potential historic properties (structure older than 1900) impacted	None	None	None	High	High	High	High	High	High	High	High	High	High	High	Low	Low	Low	Low	None	None	Low	Low	Low
Community Facilities																							
Community facility impacted	None	None	None	Medium	Medium	High	Medium	Medium	Medium	Medium	Medium	Medium	Medium	High	Low	Low	Low	Low	None	None	None	None	None

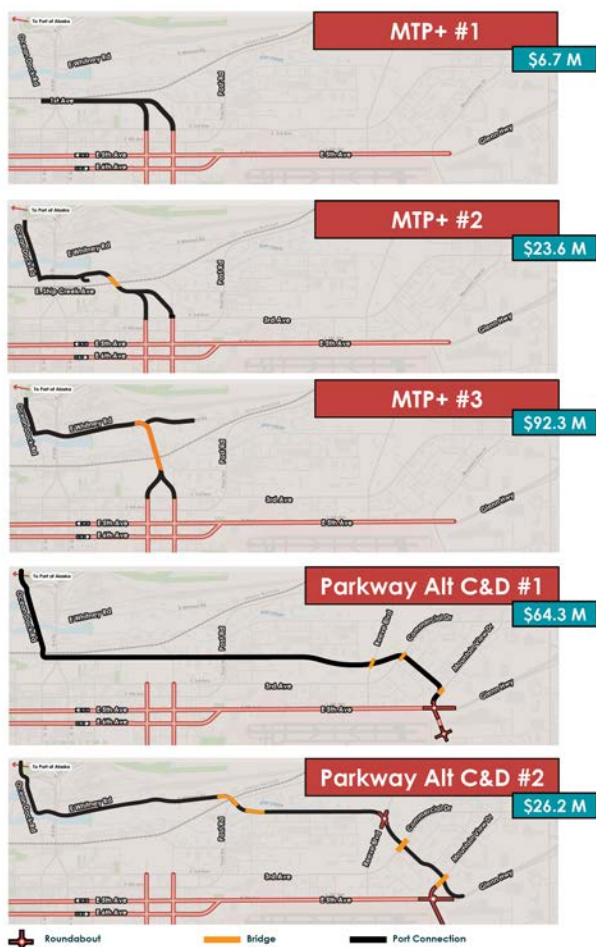
SEWARD TO GLENN CONNECTION PEL STUDY







Port Connection Alternatives



SEWARD TO GLENN CONNECTION PEL STUDY

Outdated Freeway Alternatives V. New Parkway Design

Outdated Freeway Alternatives



New Parkway Design



SEWARD TO GLENN CONNECTION PEL STUDY

MTP 2050 and MTP+ Traffic Sensitivity Tests

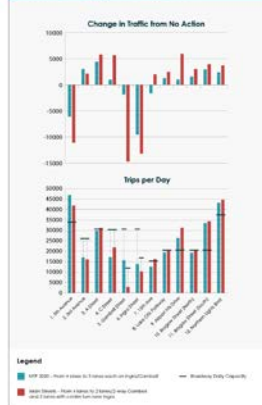
Traffic Modeling

The PEL Study is using this traffic modeling to help establish changes associated with the MTP 2050 and the community's preferred Gambell Main Street.

Traffic Modeling Highlights

- The current system has ample capacity.
- As lanes are removed, travelers are likely to divert to other roads to avoid a slow trip through Fairview.
- The diversion starts with the MTP which takes lanes off of 5th and 6th Avenues and Gambell and Ingra Streets.
- The diversion is expected to get more pronounced as additional lanes are removed, as with the 2-lane, 2-way Gambell Main Street in the MTP+.
- Lane reductions are expected to impact the efficiency of the National Highway System, increase traffic in project area neighborhoods outside of Fairview, and create safety concerns in some areas.

Volume Changes on Key Streets



Traffic Patterns



Why Traffic Modeling?

The data will help determine how many cars might need to be removed from the roadway to maintain functionality of the National Highway System and safety on our local streets. Additional traffic analysis is needed for the various PEL Study alternatives and will be shared during the next public comment period.



SEWARD TO GLENN CONNECTION PEL STUDY

We Want Your Input!



PUBLIC COMMENT PERIOD:

December 10, 2024 – February 28, 2025



VISIT OUR ONLINE OPEN HOUSE

sewardglennconnectiononline.com
December 11, 2024 – February 28, 2025



ONLINE

sewardglennconnection.com

BY EMAIL

info@sewardglennconnection.com

BY PHONE

(907) 206-2289

This planning document may be adopted in a subsequent environmental review process in accordance with 23 U.S.C. 168 Integration of Planning and Environmental Review. The environmental review, consultation, and other actions required by applicable Federal environmental laws for this project are being, or have been, carried out by DOT&PF pursuant to 23 U.S.C. 327 and a Memorandum of Understanding dated April 13, 2023, and executed by FHWA and DOT&PF.

It is the policy of the Alaska Department of Transportation and Public Facilities (DOT&PF) that no one shall be subject to discrimination on the basis of race, color, national origin, sex, age, or disability. Persons who believe they may have experienced discrimination in the delivery of these federally assisted programs or activities may file a complaint with: Alaska DOT&PF Civil Rights Office 2200 East 42nd Avenue, Room 310, Anchorage, AK 99508; Phone: 907-269-0851, Alaska Relay 7-1-1, or 1 (800) 676-3777; Fax: 907-269-0847.



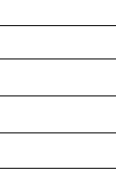
SEWARD TO GLENN CONNECTION PEL STUDY

Intentionally left blank.



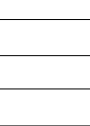
ATTACHMENT F: COMMENT FORM

COMMENT FORM



Seward – Glenn PEL Study Comment Sheet

IRS Program No. CFHWY00550 | Federal Project No. 0001653



Please share your comments!

Name: _____

E-mail: _____

Address: _____

City: _____ State: _____ Zip: _____

Please add me to the project mailing list. ☐

Comments can also be submitted via email at info@sewardglennconnection.com or mail:

Mail to:
 Seward to Glenn Connection PEL Study
 c/o HDR
 582 E 36 Ave Ste 500
 Anchorage, AK 99503

Please fold here and tape at bottom for mailing

A
PC

Seward to Glenn Connection PEL Study
 c/o HDR
 582 E 36 Ave Ste 500
 Anchorage, AK 99503

ATTACHMENT G: ONLINE OPEN HOUSE

ONLINE MEETING



Scan the QR code with your smartphone or visit sewardglennconnection.com/getinvolved.html to view an electronic version of the materials below.

Seward-Glenn CONNECTION

(907) 206-2289 | info@sewardglennconnection.com

Text Only

Welcome

The Study

Purpose & Need

Project Schedule

Balancing the Issues

Public Mtg #4 Summary

What We Learned

Roadway Dtd vs New

PEL Process

Screening Data for Alts

MTP 2050

Traffic Sensitivity

MTP Plus

The Alternatives

Port Connection Alts

Ways to Comment

English

Welcome - Seward Glenn Connection PEL Study Online Open House - Public Meeting #5

Comment Period December 10, 2024 - January 23, 2025

Welcome and thank you for participating in the fourth Seward to Glenn Connection Planning and Environmental Linkage Study Public Online Open House, hosted by the Alaska Department of Transportation and Public Facilities (DOT&PF) and Anchorage Metropolitan Area Transportation Solutions (AMATS).

Meeting Purpose

The purpose of this online open house is to share the materials that were presented at the Tuesday, December 10, 2024, in-person public meeting, which focuses on design alternatives. This online platform is open from **December 11 to January 23, 2025**.

Feedback

Your feedback is important to us! To provide feedback, you may visit the **last** section of this Online Open House or visit the website at sewardglennconnection.com.

Meeting Materials

You will also find materials shared at the in-person meeting linked on the project website under the "Get Involved" page.

This planning document may be adopted in a subsequent environmental review process in accordance with 23 U.S.C. 168 Integration of Planning and Environmental Review. The environmental review, consultation, and other actions required by applicable Federal environmental laws for this project are being, or have been, carried out by DOT&PF pursuant to 23 U.S.C. 327 and a Memorandum of Understanding dated April 11, 2023, and executed by Federal Highway Administration (FHWA) and DOT&PF.

It is the policy of the Alaska Department of Transportation and Public Facilities (DOT&PF) that no view shall be subject to discrimination on the basis of race, color, national origin, sex, age, or disability. Persons who believe they may have experienced discrimination in the delivery of these federally assisted programs or activities may file a complaint with: Alaska DOT&PF Civil Rights Office 2200 East 42nd Avenue, Room 310, Anchorage, AK 99506; Phone: (907) 269-0857, Alaska Relay 7-1-1, or 1 (800) 676-1777; Fax: (907) 269-0847.

Navigating this site

This site is best experienced on your desktop or laptop computer at 100% view. You may click the tabs in the left navigation panel to visit each poster station. You may click on each poster to enlarge it. To navigate the online open house, please follow the steps listed below:

1. Use your mouse to scroll up or down through the open house. You may also choose each poster station in the navigation panel to the left.
2. Download additional materials using links within the website.
3. Please provide your comments to the project team via the options in the "Ways to Comment" section of this online open house.

If you prefer to experience this online meeting in text format only, visit the "Text Only" page of this meeting.

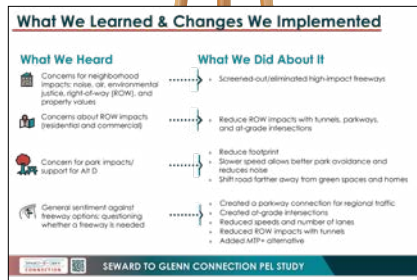
If you need any additional assistance navigating this open house website, please contact info@sewardglennconnection.com, or 907-206-2289.

Habla español? | Koj hais lus hmoob? | 8 ts tsautala samea?

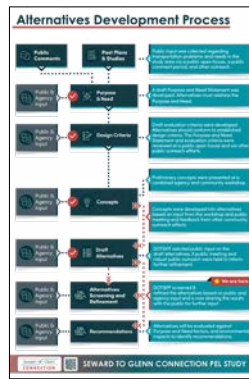
(907) 206-2289 | info@sewardglennconnection.com

[Project Website](#)





Click to enlarge



Click to enlarge



Click to enlarge



Click to enlarge



Click to enlarge



Click to enlarge



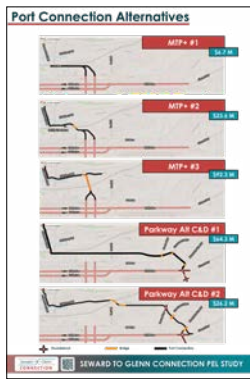
Click to enlarge



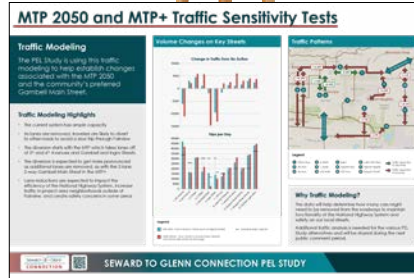
Click to enlarge



Click to enlarge



Click to enlarge



Click to enlarge



Click to enlarge

We Want Your Input!

PUBLIC COMMENT PERIOD:
December 10, 2024 – January 23, 2025

VISIT OUR ONLINE OPEN HOUSE
sewardglennconnection.com
December 11, 2024 – January 23, 2025

ONLINE BY EMAIL
info@sewardglennconnection.com

BY PHONE
(907) 261-2287

SEWARD TO GLENN CONNECTION PEL STUDY

Click to enlarge



ATTACHMENT H: PUBLIC MEETING SIGN-IN SHEET

SIGN-IN SHEETS

Sign-In Sheet Please Print Legibly

Seward to Glenn Connection PEL Study Sign-in Sheet

REG Program No. CHN000030 | Federal Project No. 0000303
Public Meeting 1 Tuesday, December 10, 2024 1:43:00pm to 6:30pm
Anchorage Senior Activity Center 1 1300 E 19th Ave, Anchorage, AK 99501

Seward to Glenn CONNECTION

Name (Please print legibly)	E-mail	Join Our Meeting List (Y or N)	Gender* (M/F)	Race* (W, AN, N, B, A, P, O)	How did you hear about this meeting? (Postcard, Newspaper, Facebook, Flyer, Other)
JAMES POSEY		Y			Facebook
Bill Aernan		Y	M	W	Postcard
John Ostros		Y	F	W	Media
WILEN DRELL		Y	F		Word of mouth
Carl Malpass					None
Paul Adams					Postcard
Jane Hope Nandy					Media
Shirley Mae					" "
Kyle Oakes		Y	F	W	Media
Ed Lerche		Y	M	W	None

The environmental review, consultation, and other actions required by applicable Federal environmental laws for this project are being, or have been, carried out by DOT/RTAP pursuant to 23 USC 327 and a Memorandum of Understanding dated November 3, 2017 and executed by FHWA and DOT/RTAP. DOT/RTAP operates all programs without regard to race, religion, color, gender, age, marital status, ability, or national origin. Full Title VI Non-Discrimination Policy: dot.alaska.gov/rtap/rtap.html.
*This information is voluntary. Its purpose is to ensure fair and equal representation by the public in all projects and programs administered by the Alaska Department of Transportation and Public Facilities. Race Categories: White (W), Alaska Native (AN), Native American (N), Black (B), Hispanic (H), Asian (A), Pacific Islander (P), and Other (O).
Page 1 of 15

Sign-In Sheet Please Print Legibly

Seward to Glenn Connection PEL Study Sign-in Sheet

REG Program No. CHN000030 | Federal Project No. 0000303
Public Meeting 1 Tuesday, December 10, 2024 1:43:00pm to 6:30pm
Anchorage Senior Activity Center 1 1300 E 19th Ave, Anchorage, AK 99501

Seward to Glenn CONNECTION

Name (Please print legibly)	E-mail	Join Our Meeting List (Y or N)	Gender* (M/F)	Race* (W, AN, N, B, A, P, O)	How did you hear about this meeting? (Postcard, Newspaper, Facebook, Flyer, Other)
Madeleine Boecher					Flyer
Dana Lederhos		Y			Flyer
Alison Wiley		Y			
Barb Bean		X			
Mary Nicholas					Flyer
Margi Lynn Weatherman		Yes	F	W	Friend
Patricia Leitude		X	F	H	Media
Stacy McKeever		Yes			
MaryDean Brownson		Yes	F	W	Other
Max Walzsch		Yes	M	W	Flyer

The environmental review, consultation, and other actions required by applicable Federal environmental laws for this project are being, or have been, carried out by DOT/RTAP pursuant to 23 USC 327 and a Memorandum of Understanding dated November 3, 2017 and executed by FHWA and DOT/RTAP. DOT/RTAP operates all programs without regard to race, religion, color, gender, age, marital status, ability, or national origin. Full Title VI Non-Discrimination Policy: dot.alaska.gov/rtap/rtap.html.
*This information is voluntary. Its purpose is to ensure fair and equal representation by the public in all projects and programs administered by the Alaska Department of Transportation and Public Facilities. Race Categories: White (W), Alaska Native (AN), Native American (N), Black (B), Hispanic (H), Asian (A), Pacific Islander (P), and Other (O).
Page 2 of 15

Sign-In Sheet Please Print Legibly

Seward to Glenn Connection PEL Study Sign-in Sheet

REG Program No. CHN000030 | Federal Project No. 0000303
Public Meeting 1 Tuesday, December 10, 2024 1:43:00pm to 6:30pm
Anchorage Senior Activity Center 1 1300 E 19th Ave, Anchorage, AK 99501

Seward to Glenn CONNECTION

Name (Please print legibly)	E-mail	Join Our Meeting List (Y or N)	Gender* (M/F)	Race* (W, AN, N, B, A, P, O)	How did you hear about this meeting? (Postcard, Newspaper, Facebook, Flyer, Other)
Melissa Miller		Y	F	W	Flyer & mail
Keith & Barb Russell		Y	F	W	Facebook
Karen Elason		N	M	W	FIS
David Roseman		Y	M	W	RPCC
John Stahls		Y	M	W	Email
Sue DeFreest		N	F	W	Friends
Son Spreng					
Patricia Fuller		Y	F	W	Alaska Post
Penny Parkner			F	W	mailing
Chelsea Ward-Valier		Y	F	W	email

The environmental review, consultation, and other actions required by applicable Federal environmental laws for this project are being, or have been, carried out by DOT/RTAP pursuant to 23 USC 327 and a Memorandum of Understanding dated November 3, 2017 and executed by FHWA and DOT/RTAP. DOT/RTAP operates all programs without regard to race, religion, color, gender, age, marital status, ability, or national origin. Full Title VI Non-Discrimination Policy: dot.alaska.gov/rtap/rtap.html.
*This information is voluntary. Its purpose is to ensure fair and equal representation by the public in all projects and programs administered by the Alaska Department of Transportation and Public Facilities. Race Categories: White (W), Alaska Native (AN), Native American (N), Black (B), Hispanic (H), Asian (A), Pacific Islander (P), and Other (O).
Page 3 of 15

Sign-In Sheet Please Print Legibly

Seward to Glenn Connection PEL Study Sign-in Sheet

REG Program No. CHN000030 | Federal Project No. 0000303
Public Meeting 1 Tuesday, December 10, 2024 1:43:00pm to 6:30pm
Anchorage Senior Activity Center 1 1300 E 19th Ave, Anchorage, AK 99501

Seward to Glenn CONNECTION

Name (Please print legibly)	E-mail	Join Our Meeting List (Y or N)	Gender* (M/F)	Race* (W, AN, N, B, A, P, O)	How did you hear about this meeting? (Postcard, Newspaper, Facebook, Flyer, Other)
Robert E. Wagner		N	M		relative
Tamara Casper		N			RPCC
Don Candall					word of mouth
Emily Weiser			F	W	friend
Angus Matheny			M	W	
Mal Langley					my GC (RPCC)
Mark Butler		Yes			
Tanya Haddock		Y	F	A	
Chris Baker		Y	M	W	mailing
Morgan Bender		city N	F	W	Flyer

The environmental review, consultation, and other actions required by applicable Federal environmental laws for this project are being, or have been, carried out by DOT/RTAP pursuant to 23 USC 327 and a Memorandum of Understanding dated November 3, 2017 and executed by FHWA and DOT/RTAP. DOT/RTAP operates all programs without regard to race, religion, color, gender, age, marital status, ability, or national origin. Full Title VI Non-Discrimination Policy: dot.alaska.gov/rtap/rtap.html.
*This information is voluntary. Its purpose is to ensure fair and equal representation by the public in all projects and programs administered by the Alaska Department of Transportation and Public Facilities. Race Categories: White (W), Alaska Native (AN), Native American (N), Black (B), Hispanic (H), Asian (A), Pacific Islander (P), and Other (O).
Page 4 of 15

Sign-In Sheet Please Print Legibly

Seward to Glenn Connection PEL Study Sign-in Sheet

REG Program No. CHN000030 | Federal Project No. 0000303
Public Meeting 1 Tuesday, December 10, 2024 1:43:00pm to 6:30pm
Anchorage Senior Activity Center 1 1300 E 19th Ave, Anchorage, AK 99501

Seward to Glenn CONNECTION

Name (Please print legibly)	E-mail	Join Our Meeting List (Y or N)	Gender* (M/F)	Race* (W, AN, N, B, A, P, O)	How did you hear about this meeting? (Postcard, Newspaper, Facebook, Flyer, Other)
SJ Klein		not			Twitter
Nancy Shannon		Y	F	W	Neighbor
Leola Ruthers Ford		Y	F		relative
Tim BENJAMIN TENDI		Y	M	W	media
Mona KUTSAW		Y	F	W	neighbor
DAVID FRITZ		not	M	W	email
Karen Gonne Harrell			F	W	Facebook
MIKE STONECROCK		not	M	A	mail
Michael Swalling		Y	M	W	media
Gertrude Tormey		X	F	W	mailing

The environmental review, consultation, and other actions required by applicable Federal environmental laws for this project are being, or have been, carried out by DOT/RTAP pursuant to 23 USC 327 and a Memorandum of Understanding dated November 3, 2017 and executed by FHWA and DOT/RTAP. DOT/RTAP operates all programs without regard to race, religion, color, gender, age, marital status, ability, or national origin. Full Title VI Non-Discrimination Policy: dot.alaska.gov/rtap/rtap.html.
*This information is voluntary. Its purpose is to ensure fair and equal representation by the public in all projects and programs administered by the Alaska Department of Transportation and Public Facilities. Race Categories: White (W), Alaska Native (AN), Native American (N), Black (B), Hispanic (H), Asian (A), Pacific Islander (P), and Other (O).
Page 5 of 15

Sign-In Sheet Please Print Legibly

Seward to Glenn Connection PEL Study Sign-in Sheet

REG Program No. CHN000030 | Federal Project No. 0000303
Public Meeting 1 Tuesday, December 10, 2024 1:43:00pm to 6:30pm
Anchorage Senior Activity Center 1 1300 E 19th Ave, Anchorage, AK 99501

Seward to Glenn CONNECTION

Name (Please print legibly)	E-mail	Join Our Meeting List (Y or N)	Gender* (M/F)	Race* (W, AN, N, B, A, P, O)	How did you hear about this meeting? (Postcard, Newspaper, Facebook, Flyer, Other)
Jim Richardson		Y	M	W	letter
Jonathan Schwartz		N	M	W	friends
Natalie Wilson			F	W	email
Donna Gifford		Y	M	W	flyer
Shelley Gifford		Y	F	W	Shelley
Scott Tognini		Y	M	W	legislative shift
Jerome Bealder		Y	M	W	word of mouth
Madeleine Hildebrand		Y	F	W	email
Anna Tognini			M	W	
Charlotte Harwood		Y	F	W	post card

The environmental review, consultation, and other actions required by applicable Federal environmental laws for this project are being, or have been, carried out by DOT/RTAP pursuant to 23 USC 327 and a Memorandum of Understanding dated November 3, 2017 and executed by FHWA and DOT/RTAP. DOT/RTAP operates all programs without regard to race, religion, color, gender, age, marital status, ability, or national origin. Full Title VI Non-Discrimination Policy: dot.alaska.gov/rtap/rtap.html.
*This information is voluntary. Its purpose is to ensure fair and equal representation by the public in all projects and programs administered by the Alaska Department of Transportation and Public Facilities. Race Categories: White (W), Alaska Native (AN), Native American (N), Black (B), Hispanic (H), Asian (A), Pacific Islander (P), and Other (O).
Page 6 of 15

Sign-In Sheet
Please
Print Legibly

Seward to Glenn Connection PEL Study Sign-in Sheet
803 Program No. CHN07000001 | Federal Project No. 00000003
Public Meeting 1 Tuesday, December 10, 2024 4:30pm to 6:30pm
Anchorage Senior Activity Center 1300 E 19th Ave, Anchorage, AK 99501



Name (Please print legibly)	E-mail	Join Our Mailing List (Y or N)	Gender* (M/F)	Race* (W, A, N, B, A, P, O)	How did you hear about this meeting? (Postcard, Newspaper, Facebook, Print, Other)
David Gardner		N	M	W	
Lisa Horne		N	F	W	Postcard
DAVID GARDNER		Y	M		
ALLEN HEDREN			M		
Boston Rutherford					Sea
Sean Holland		Y	M	W	Internet
E. Kiger		Y	F		
David Lockard		Y			Friends
Robert Myers		Y	M		RPC community
Robert Myers		Y	F		mailing
Lisa Smith		Y	M	W	

The environmental review, consultation, and other actions required by applicable Federal environmental laws for this project are being, or have been, carried out by DOT/FAA pursuant to 23 USC 327 and a Memorandum of Understanding dated November 3, 2017 and executed by FHWA and DOT/FAA. DOT/FAA operates all programs without regard to race, religion, color, gender, age, marital status, ability, or national origin. Full Title VI Notice/Consultation Policy for Alaska projects, statement dated: To file a complaint, go to: dot.alaska.gov/ce/TitleVI.html.

*This information is voluntary. Its purpose is to ensure fair and equal representation by the public in all projects and programs administered by the Alaska Department of Transportation and Public Facilities. Race Categories: White (W), Alaska Native (AN), Native American (NA), Black (B), Hispanic (H), Asian (A), Pacific Islander (P), and Other (O).

Page 7 of 15

Sign-In Sheet
Please
Print Legibly

Seward to Glenn Connection PEL Study Sign-in Sheet
803 Program No. CHN07000001 | Federal Project No. 00000003
Public Meeting 1 Tuesday, December 10, 2024 4:30pm to 6:30pm
Anchorage Senior Activity Center 1300 E 19th Ave, Anchorage, AK 99501



Name (Please print legibly)	E-mail	Join Our Mailing List (Y or N)	Gender* (M/F)	Race* (W, A, N, B, A, P, O)	How did you hear about this meeting? (Postcard, Newspaper, Facebook, Print, Other)
David Smith		Y	M	W	Friend
Ryan Kellman		Y			North Star
David Walker - Raint		Y	F/M		Open House
Mike Zaccaro		N	M		Community Council
Alexa Dossy		Y	F	W	
John Christensen			F/M		RPCC
Marie Gaudin		N	F	W	email
John Reed		N	M	W	Community Council
Nicole Dant			F	W	work
Kate Shellen		Y	F	W	Open House

The environmental review, consultation, and other actions required by applicable Federal environmental laws for this project are being, or have been, carried out by DOT/FAA pursuant to 23 USC 327 and a Memorandum of Understanding dated November 3, 2017 and executed by FHWA and DOT/FAA. DOT/FAA operates all programs without regard to race, religion, color, gender, age, marital status, ability, or national origin. Full Title VI Notice/Consultation Policy for Alaska projects, statement dated: To file a complaint, go to: dot.alaska.gov/ce/TitleVI.html.

*This information is voluntary. Its purpose is to ensure fair and equal representation by the public in all projects and programs administered by the Alaska Department of Transportation and Public Facilities. Race Categories: White (W), Alaska Native (AN), Native American (NA), Black (B), Hispanic (H), Asian (A), Pacific Islander (P), and Other (O).

Page 8 of 15

Sign-In Sheet
Please
Print Legibly

Seward to Glenn Connection PEL Study Sign-in Sheet
803 Program No. CHN07000001 | Federal Project No. 00000003
Public Meeting 1 Tuesday, December 10, 2024 4:30pm to 6:30pm
Anchorage Senior Activity Center 1300 E 19th Ave, Anchorage, AK 99501



Name (Please print legibly)	E-mail	Join Our Mailing List (Y or N)	Gender* (M/F)	Race* (W, A, N, B, A, P, O)	How did you hear about this meeting? (Postcard, Newspaper, Facebook, Print, Other)
Herbert Braun		Y	M	W	Postcard, RPCC mailer
Erin Campbell		Y	F	W	Mailers
Erin Johnson		Y	M	W	
Karen Larm		Y	F	W	email
Jessie Lerman		Y	F	W	
Git Kravchuk		Y	M	W	
Diana Rhoades		Y	F	W	email
Dave Evans		Y	M	W	
Heather Jensen		Y	F	W	email
Tammy Taylor, Chel Makela		Y	F	W	Friend

The environmental review, consultation, and other actions required by applicable Federal environmental laws for this project are being, or have been, carried out by DOT/FAA pursuant to 23 USC 327 and a Memorandum of Understanding dated November 3, 2017 and executed by FHWA and DOT/FAA. DOT/FAA operates all programs without regard to race, religion, color, gender, age, marital status, ability, or national origin. Full Title VI Notice/Consultation Policy for Alaska projects, statement dated: To file a complaint, go to: dot.alaska.gov/ce/TitleVI.html.

*This information is voluntary. Its purpose is to ensure fair and equal representation by the public in all projects and programs administered by the Alaska Department of Transportation and Public Facilities. Race Categories: White (W), Alaska Native (AN), Native American (NA), Black (B), Hispanic (H), Asian (A), Pacific Islander (P), and Other (O).

Page 9 of 15

Sign-In Sheet
Please
Print Legibly

Seward to Glenn Connection PEL Study Sign-in Sheet
803 Program No. CHN07000001 | Federal Project No. 00000003
Public Meeting 1 Tuesday, December 10, 2024 4:30pm to 6:30pm
Anchorage Senior Activity Center 1300 E 19th Ave, Anchorage, AK 99501



Name (Please print legibly)	E-mail	Join Our Mailing List (Y or N)	Gender* (M/F)	Race* (W, A, N, B, A, P, O)	How did you hear about this meeting? (Postcard, Newspaper, Facebook, Print, Other)
Shari Whitlock		Y	F	W	email, RPCC
Timothy Rogers		Y	F	W	email
Anna Tim Stone		Y	M	W	RPCC
Alex Reed		N	M	W	
Elizabeth Helmgren		Y	F	W	mailing
Melanie Ross		Y	F	W	mail
Dan Weiler		Y	M	W	RPCC
Joan Goffman		Y	F	W	RPCC
Mark Mills		Y			ADN
Sylvia McEllen		Y	M	W	RPCC

The environmental review, consultation, and other actions required by applicable Federal environmental laws for this project are being, or have been, carried out by DOT/FAA pursuant to 23 USC 327 and a Memorandum of Understanding dated November 3, 2017 and executed by FHWA and DOT/FAA. DOT/FAA operates all programs without regard to race, religion, color, gender, age, marital status, ability, or national origin. Full Title VI Notice/Consultation Policy for Alaska projects, statement dated: To file a complaint, go to: dot.alaska.gov/ce/TitleVI.html.

*This information is voluntary. Its purpose is to ensure fair and equal representation by the public in all projects and programs administered by the Alaska Department of Transportation and Public Facilities. Race Categories: White (W), Alaska Native (AN), Native American (NA), Black (B), Hispanic (H), Asian (A), Pacific Islander (P), and Other (O).

Page 10 of 15

Sign-In Sheet
Please
Print Legibly

Seward to Glenn Connection PEL Study Sign-in Sheet
803 Program No. CHN07000001 | Federal Project No. 00000003
Public Meeting 1 Tuesday, December 10, 2024 4:30pm to 6:30pm
Anchorage Senior Activity Center 1300 E 19th Ave, Anchorage, AK 99501



Name (Please print legibly)	E-mail	Join Our Mailing List (Y or N)	Gender* (M/F)	Race* (W, A, N, B, A, P, O)	How did you hear about this meeting? (Postcard, Newspaper, Facebook, Print, Other)
Catherine Canfield					
Steve Canfield					
Don Mowery					
John Thwait		N	M	W	Other
Lisa Saffert					
Michele Elkan					
Adrian Nelson					Applicable Community
Michael Sirovoff					Applicable Community
ANNA BOSCH			F	W	
Mary Olah		Y	F	W	postcard

The environmental review, consultation, and other actions required by applicable Federal environmental laws for this project are being, or have been, carried out by DOT/FAA pursuant to 23 USC 327 and a Memorandum of Understanding dated November 3, 2017 and executed by FHWA and DOT/FAA. DOT/FAA operates all programs without regard to race, religion, color, gender, age, marital status, ability, or national origin. Full Title VI Notice/Consultation Policy for Alaska projects, statement dated: To file a complaint, go to: dot.alaska.gov/ce/TitleVI.html.

*This information is voluntary. Its purpose is to ensure fair and equal representation by the public in all projects and programs administered by the Alaska Department of Transportation and Public Facilities. Race Categories: White (W), Alaska Native (AN), Native American (NA), Black (B), Hispanic (H), Asian (A), Pacific Islander (P), and Other (O).

Page 11 of 15

Sign-In Sheet
Please
Print Legibly

Seward to Glenn Connection PEL Study Sign-in Sheet
803 Program No. CHN07000001 | Federal Project No. 00000003
Public Meeting 1 Tuesday, December 10, 2024 4:30pm to 6:30pm
Anchorage Senior Activity Center 1300 E 19th Ave, Anchorage, AK 99501



Name (Please print legibly)	E-mail	Join Our Mailing List (Y or N)	Gender* (M/F)	Race* (W, A, N, B, A, P, O)	How did you hear about this meeting? (Postcard, Newspaper, Facebook, Print, Other)
Jeha Lison Stinson		Y	M	F	
Melinda Gant		Y	F	W	
Gretchen Cuddy			F	W	RPCC
Blaise Amyl Patrick Simon		Y	M	W	
Tim Hays (HBR)		Y	M		HBR - RPCC
Pete Peterson		Y	M	W	FB
Jonny Hays		Y	M	W	RPCC
Bill Mendenhall		Y	M		RPCC
Sam Wang		Y			RPCC
Seamus Kim Smith		Y	M		

The environmental review, consultation, and other actions required by applicable Federal environmental laws for this project are being, or have been, carried out by DOT/FAA pursuant to 23 USC 327 and a Memorandum of Understanding dated November 3, 2017 and executed by FHWA and DOT/FAA. DOT/FAA operates all programs without regard to race, religion, color, gender, age, marital status, ability, or national origin. Full Title VI Notice/Consultation Policy for Alaska projects, statement dated: To file a complaint, go to: dot.alaska.gov/ce/TitleVI.html.

*This information is voluntary. Its purpose is to ensure fair and equal representation by the public in all projects and programs administered by the Alaska Department of Transportation and Public Facilities. Race Categories: White (W), Alaska Native (AN), Native American (NA), Black (B), Hispanic (H), Asian (A), Pacific Islander (P), and Other (O).

Page 12 of 15

Sign-In Sheet
Please
Print Legibly

Seward to Glenn Connection PEL Study Sign-in Sheet
BIS Program No. CHN000330 | Federal Project No. 000033
Public Meeting 1 Tuesday, December 10, 2024 4:30pm to 6:30pm
Anchorage Senior Activity Center 1300 E 19th Ave, Anchorage, AK 99501



Name (Please print legibly)	E-mail	Join Our Mailing List (Y or N)	Gender* (M/F)	Race* (W, A, N, B, A, P, O)	How did you hear about this meeting? (Please print: Newspaper, Facebook, Print, Other)
Suzie Alexander			F	W	Facebook - Facebook
Danawee Coop		Y	M	W	FB
Michael O'Connor		Y	M	W	Neighbor

The environmental review, consultation, and other actions required by applicable Federal environmental laws for this project are being, or have been, carried out by DOTBAP pursuant to 23 USC 327 and a Memorandum of Understanding dated November 5, 2017 and executed by DOTBAP and DOTBAP. DOTBAP operates all programs without regard to race, religion, color, gender, age, marital status, ability or national origin. Full Title VI Notice of Disproportionate Impact (NODI) is being prepared. To be a complete, go to the link: <https://www.dnr.alaska.gov/transportation>

*This information is voluntary. Its purpose is to ensure fair and equal representation by the public in all projects and programs administered by the Alaska Department of Transportation and Public Facilities. Race Categories: White (W), Alaska Native (AN), Native American (NA), Black (B), Hispanic (H), Asian (A), Pacific Islander (P), and Other (O).

Page 13 of 15

Sign-In Sheet
Please
Print Legibly

Seward to Glenn Connection PEL Study Sign-in Sheet
BIS Program No. CHN000330 | Federal Project No. 000033
Public Meeting 1 Tuesday, December 10, 2024 4:30pm to 6:30pm
Anchorage Senior Activity Center 1300 E 19th Ave, Anchorage, AK 99501



Name (Please print legibly)	E-mail	Join Our Mailing List (Y or N)	Gender* (M/F)	Race* (W, A, N, B, A, P, O)	How did you hear about this meeting? (Please print: Newspaper, Facebook, Print, Other)
Rob Clark		Y	M	W	Facebook, etc
Dee Sygen		Y	M	W	?

The environmental review, consultation, and other actions required by applicable Federal environmental laws for this project are being, or have been, carried out by DOTBAP pursuant to 23 USC 327 and a Memorandum of Understanding dated November 5, 2017 and executed by DOTBAP and DOTBAP. DOTBAP operates all programs without regard to race, religion, color, gender, age, marital status, ability or national origin. Full Title VI Notice of Disproportionate Impact (NODI) is being prepared. To be a complete, go to the link: <https://www.dnr.alaska.gov/transportation>

*This information is voluntary. Its purpose is to ensure fair and equal representation by the public in all projects and programs administered by the Alaska Department of Transportation and Public Facilities. Race Categories: White (W), Alaska Native (AN), Native American (NA), Black (B), Hispanic (H), Asian (A), Pacific Islander (P), and Other (O).

Page 14 of 15

Sign-In Sheet
Please
Print Legibly

Seward to Glenn Connection PEL Study Sign-in Sheet
BIS Program No. CHN000330 | Federal Project No. 000033
Public Meeting 1 Tuesday, December 10, 2024 4:30pm to 6:30pm
Anchorage Senior Activity Center 1300 E 19th Ave, Anchorage, AK 99501



Name (Please print legibly)	E-mail	Join Our Mailing List (Y or N)	Gender* (M/F)	Race* (W, A, N, B, A, P, O)	How did you hear about this meeting? (Please print: Newspaper, Facebook, Print, Other)
James Lora		N	F		
Jody Olsen & JEFF OLSEN		Y	F/M	W	Friper
Limon Simon		Y	F	AN	Spouse
Rebecca Risher		Y	F		email
Sharon Chismard		Y	F	W	Friper
Charlene Dolphin		Y	F	W	Facebook
Bernie Wittwer		Already joined	F		email
Janet Thiel		Y	F	W	has no decision
Matt Blonsky		Y	M	W	several of the above
Heather Jensen		Y	F	W	Facebook / Print / Friends

The environmental review, consultation, and other actions required by applicable Federal environmental laws for this project are being, or have been, carried out by DOTBAP pursuant to 23 USC 327 and a Memorandum of Understanding dated November 5, 2017 and executed by DOTBAP and DOTBAP. DOTBAP operates all programs without regard to race, religion, color, gender, age, marital status, ability or national origin. Full Title VI Notice of Disproportionate Impact (NODI) is being prepared. To be a complete, go to the link: <https://www.dnr.alaska.gov/transportation>

*This information is voluntary. Its purpose is to ensure fair and equal representation by the public in all projects and programs administered by the Alaska Department of Transportation and Public Facilities. Race Categories: White (W), Alaska Native (AN), Native American (NA), Black (B), Hispanic (H), Asian (A), Pacific Islander (P), and Other (O).

Page 15 of 15